



Agilent N7744A
4-Channel Optical Multiport Power Meter
Agilent N7745A
8-Channel Optical Multiport Power Meter

User's Guide

Notices

© Agilent Technologies, Inc. 2008

No part of this manual may be reproduced in any form or by any means (including electronic storage and retrieval or translation into a foreign language) without prior agreement and written consent from Agilent Technologies, Inc. as governed by United States and international copyright laws.

Manual Part Number

N7744-90B01

Edition

First edition, April 2008

Printed in Germany

Agilent Technologies Deutschland GmbH
Herrenberger Str. 130
71034 Böblingen, Germany

Warranty

This Agilent Technologies instrument product is warranted against defects in material and workmanship for a period of one year from date of shipment. During the warranty period, Agilent will, at its option, either repair or replace products that prove to be defective.

For warranty service or repair, this product must be returned to a service facility designated by Agilent. Buyer shall prepay shipping charges to Agilent and Agilent shall pay shipping charges to return the product to Buyer. However, Buyer shall pay all shipping charges, duties, and taxes for products returned to Agilent from another country.

Agilent warrants that its software and firmware designated by Agilent for use with an instrument will execute its programming instructions when properly installed on that instrument. Agilent does not warrant that the operation of the instrument, software, or firmware will be uninterrupted or error free.

Limitation of Warranty

The foregoing warranty shall not apply to defects resulting from improper or inadequate maintenance by Buyer, Buyer-supplied software or interfacing, unauthorized

modification or misuse, operation outside of the environmental specifications for the product, or improper site preparation or maintenance.

No other warranty is expressed or implied. Agilent Technologies specifically disclaims the implied warranties of Merchantability and Fitness for a Particular Purpose.

Technology Licenses

The hardware and/or software described in this document are furnished under a license and may be used or copied only in accordance with the terms of such license.

Restricted Rights Legend

If software is for use in the performance of a U.S. Government prime contract or sub-contract, Software is delivered and licensed as "Commercial computer software" as defined in DFAR 252.227-7014 (June 1995), or as a "commercial item" as defined in FAR 2.101(a) or as "Restricted computer software" as defined in FAR 52.227-19 (June 1987) or any equivalent agency regulation or contract clause. Use, duplication or disclosure of Software is subject to Agilent Technologies' standard commercial license terms, and non-DOD Departments and Agencies of the U.S. Government will receive no greater than Restricted Rights as defined in FAR 52.227-19(c)(1-2) (June 1987). U.S. Government users will receive no greater than Limited Rights as defined in FAR 52.227-14 (June 1987) or DFAR 252.227-7015 (b)(2) (November 1995), as applicable in any technical data.

Exclusive Remedies

The remedies provided herein are Buyer's sole and exclusive remedies. Agilent Technologies shall not be liable for any direct, indirect, special, incidental, or consequential damages whether based on contract, tort, or any other legal theory.

Assistance

Product maintenance agreements and other customer assistance agreements are available for Agilent Technologies prod-

ucts. For any assistance contact your nearest Agilent Technologies Sales and Service Office.

Certification

Agilent Technologies Inc. certifies that this product met its published specifications at the time of shipment from the factory. Agilent Technologies further certifies that its calibration measurements are traceable to the United States National Institute of Standards and Technology, NIST (formerly the United States National Bureau of Standards, NBS) to the extent allowed by the Institutes's calibration facility, and to the calibration facilities of other International Standards Organization members.

ISO 9001 Certification

Produced to ISO 9001 international quality system standard as part of our objective of continually increasing customer satisfaction through improved process control.

Safety Notices

CAUTION

A **CAUTION** notice calls attention to an operating procedure, practice, or the like that, if not correctly performed or adhered to, could result in damage to the product or loss of important data. Do not proceed beyond a **CAUTION** notice until the indicated conditions are fully understood and met.

WARNING

A **WARNING** notice calls attention to an operating procedure, practice, or the like that, if not correctly performed or adhered to, could result in personal injury or death. Do not proceed beyond a **WARNING** notice until the indicated conditions are fully understood and met.

Safety Considerations

The following general safety precautions must be observed during all phases of operation, service, and repair of this instrument. Failure to comply with these precautions or with specific warnings elsewhere in this manual violates safety standards of design, manufacture, and intended use of the instrument. Agilent Technologies Inc. assumes no liability for the customer's failure to comply with these requirements.

This product has been designed and tested in accordance with IEC Publication 61010-1, Safety Requirements for Electrical Equipment for Measurement, Control and Laboratory, and has been supplied in a safe condition. The instruction documentation contains information and warnings that must be followed by the user to ensure safe operation and to maintain the product in a safe condition.

Safety Symbols

CAUTION

The *caution* sign denotes a hazard. It calls attention to a procedure which, if not correctly performed or adhered to, could result in damage to or destruction of the product. Do not proceed beyond a caution sign until the indicated conditions are fully understood and met.

WARNING

The *warning* sign denotes a hazard. It calls attention to a procedure which, if not correctly performed or adhered to, could result in injury or loss of life. Do not proceed beyond a warning sign until the indicated conditions are fully understood and met.

General

This is a Safety Class 1 instrument (provided with a protective earth terminal) and has been manufactured and tested according to international safety standards.

Before operation, you should review the instrument and manual for safety markings and instructions. You must follow these to ensure safe operation and to maintain the instrument in safe condition.

Some Agilent N7744/5A circuits are powered whenever the instrument is connected to the AC power source. To disconnect from the line power, disconnect the power cord either at the rear power inlet or at the AC line power source (receptacle).

One of these must always be accessible. If the instrument is in a cabinet, it must be disconnected from the line power by the system's line power switch.

WARNING

To avoid hazardous electrical shock, do not perform electrical tests when there are signs of shipping damage to any portion of the outer enclosure (covers, panels, and so on).

Operating Environment

WARNING

The Agilent N7744/5A Optical Multiport Power Meter is not designed for outdoor use. To prevent potential fire or shock hazard, do not expose the instrument to rain or other excessive moisture.

Line Power Requirements

CAUTION

The Agilent N7744/5A Optical Multiport Power Meter complies with overvoltage category II and can operate from the single-phase AC power source that supplies between 100 V and 240 V at a frequency in the range 50 to 60 Hz. The maximum power consumption is 60 VA with all options installed.

Input/Output Signals

CAUTION

There is one input BNC connector: Trigger In. This is a TTL input. A maximum of 5 V can be applied as an external voltage to this input connector.

There is one output BNC connector: Trigger Out. This is a TTL output. Do not apply an external voltage to this connector.

Line Power Connectors

In accordance with international safety standards, the instrument has a three-wire power cable. When connected to an appropriate AC power receptacle, this cable earths the instrument cabinet. The type of power cable shipped with each instrument depends on the country of destination. Please refer to [“Accessories on page 49](#) for the part numbers of available power cables.

WARNING

To avoid the possibility of injury or death, you must observe the following precautions before switching on the instrument.

- **Insert the power cable plug only into a socket outlet provided with a protective earth contact. Do not negate this protective action by the using an extension cord without a protective conductor.**
- **Do not interrupt the protective earth connection intentionally.**
- **Do not remove protective covers. Operating personnel must not remove instrument covers. Component replacement and internal adjustments must be made only by qualified service personnel.**
- **Instruments that appear damaged or defective should be made inoperative and secured against unintended operation until they can be repaired by qualified service personnel.**
- **Defective, damaged, or malfunctioning laser sources must be returned to an Agilent Technologies Service Center.**

Do not operate the instrument in the presence of flammable gases or fumes. Operation of any electrical instrument in such an environment constitutes a definite safety hazard.

Instrument Markings



The instruction manual symbol. The product is marked with this warning symbol when it is necessary for the user to refer to the instructions in the manual.



The CE mark is a registered trademark of the European Community.



The CSA mark is a registered trademark of the Canadian Standards Association.



The C-Tick mark is a registered trademark of the Australian Spectrum Management Agency.



The recycling symbol indicates the general ease with which the instrument can be recycled.



Do not dispose in domestic household waste.



To return unwanted products, contact your local Agilent office, or see www.agilent.com/environment/product/ for more information.

| | |
|-------------------------|---|
| Safety Considerations | 3 |
| Safety Symbols | 3 |
| General | 3 |
| Operating Environment | 4 |
| Line Power Requirements | 4 |
| Input/Output Signals | 4 |
| Line Power Connectors | 4 |
| Instrument Markings | 5 |

1 Getting Started

| | |
|--|----|
| Agilent N7744/5A Optical Multiport Power Meter | 12 |
| Initial Inspection | 13 |
| AC Line Power Supply Requirements | 14 |
| Line Power Requirements | 14 |
| Line Power Cable | 14 |
| Changing the Fuse | 15 |
| Operating and Storage Environment | 16 |
| Temperature | 16 |
| Humidity | 16 |
| Altitude | 16 |
| Pollution Protection | 16 |
| Instrument Cooling | 16 |
| Input and Output Connectors | 18 |
| Front and Rear Panels | 18 |
| Making Optical Connections | 19 |
| Removing Optical Interfaces | 20 |
| Electrical Connectors | 20 |
| LAN Interface | 20 |
| GPIB Interface | 23 |
| USB Interface | 25 |
| Powering Up the Instrument | 25 |
| Connecting to the Instrument | 25 |
| Claims and Repackaging | 31 |
| Return Shipments to Agilent Technologies | 31 |

2 Power Measurement

| | |
|---|----|
| Controlling the Optical Multiport Power Meter | 34 |
| How to change the settings of the Optical Multiport Power Meter | 35 |
| How to Measure Power | 37 |
| The Power Value | 37 |
| How to Set the Power Unit | 37 |

| | |
|---|----|
| How to Set the Calibration Offset | 38 |
| How to Set the Reference Level | 38 |
| How to Set the Wavelength | 40 |
| How to Remove Electrical Offsets (Zero) | 40 |
| How to Choose the Range Mode | 41 |
| How to Set the Range | 41 |
| How to Set the Averaging Time | 42 |
| How to Choose the MinMax Mode | 42 |
| How to Use External Triggers | 43 |

3 Applications

| | |
|---------------------------|----|
| The Logging Application | 46 |
| The Stability Application | 47 |

4 Accessories

| | |
|---|----|
| Instrument and Options - Agilent N7744A, N7745A, N7740A | 50 |
| Instrument and Options | 50 |
| Adapters and bare fiber holders | 50 |
| Cables | 50 |

5 Specifications and Regulations Compliance

| | |
|------------------------------------|----|
| Definition of Terms | 52 |
| Literature | 58 |
| Technical Specifications | 59 |
| Declarations of Conformity | 62 |
| Regulations Information | 63 |
| EMC Canada | 63 |
| Acoustic Noise Information Germany | 63 |
| Remove all doubt | 64 |
| www.agilent.com | 65 |

6 Cleaning Instructions

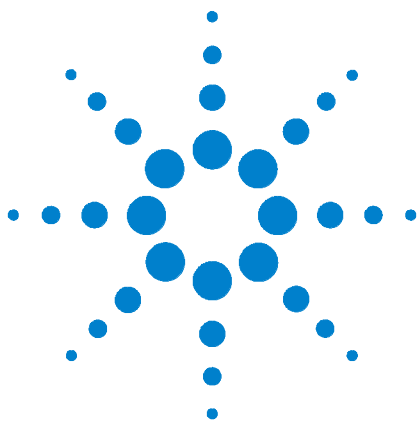
| | |
|--|----|
| Safety Precautions | 68 |
| Why is it important to clean optical devices ? | 69 |
| What do I need for proper cleaning? | 70 |
| Standard Cleaning Equipment | 70 |
| Additional Cleaning Equipment | 73 |
| Preserving Connectors | 75 |
| Cleaning Instrument Housings | 76 |

| | |
|--|----|
| Which Cleaning Procedure should I use? | 77 |
| How to clean connectors | 78 |
| How to clean connector adapters | 80 |
| How to clean bare fiber adapters | 81 |
| How to clean optical glass plates | 82 |
| Additional Cleaning Information | 83 |
| How to clean bare fiber ends | 83 |
| Other Cleaning Hints | 84 |

7 Firmware Upgrades

8 Error Messages

| | |
|-----------|----|
| SYST:ERR? | 88 |
|-----------|----|



1 Getting Started

This chapter helps you start using your Agilent N7744/5A Optical Multiport Power Meter.

Agilent N7744/5A Optical Multiport Power Meter 12

Initial Inspection 13

AC Line Power Supply Requirements 14

Operating and Storage Environment 16

Input and Output Connectors 18

Claims and Repackaging 31



Agilent N7744/5A Optical Multiport Power Meter

The Agilent N7744A and Agilent N7745A are optical power meters with 4 or 8 power-sensor ports respectively. They address productivity challenges by increasing throughput and operational efficiency using industry-leading device connectivity, high-speed acquisition of measurement data and fast data transfer for post-processing.

The Agilent N7744A and Agilent N7745A are designed to characterize optical multiport components, such as multiplexers, PON splitters, wavelength selective switches (WSS) and ROADMs, in all product phases from R&D to manufacturing.

The one rack unit (1U half-rack high) instrument can be operated alone or with other units, by PC connected over LAN, USB, or GPIB.

The unprecedented N7740A fiber connectivity concept consists of a quadruple adapter (quad-adapter) with a quick-locking mechanism. Up to four fiber connectors from the device under test (DUT) can be connected in a comfortable working position to one quad-adapter. The push-on locking mechanism makes it easy and secure to attach the quad-adapter to and remove the quad-adapter from the instrument in seconds. With multiple quad-adapters, the measurement task can be fully separated from the DUT connection task. This means a further increase in test throughput. Where this is not an issue, traditional single connector connectivity is supported as well.

These power meters are highly compatible with setups and programs developed using the Agilent 816x modular power meters. They are also easy to synchronize with Agilent tunable laser sources, to make spectral measurements. The functionality for time-dependent measurement has been extended with sampling at up to 1 MHz and data logging of up to 1 million samples for each port.

Initial Inspection

Inspect the shipping container for damage. If there is damage to the container or cushioning, keep them until you have checked the contents of the shipment for completeness and verified the instrument both mechanically and electrically.

The Function Tests give a procedure for checking the operation of the instrument. If the contents are incomplete, mechanical damage or defect is apparent, or if an instrument does not pass the operator's checks, notify the nearest Agilent Technologies Sales/Service Office.

WARNING

To avoid hazardous electrical shock, do not perform electrical tests when there are signs of shipping damage to any portion of the outer enclosure (covers, panels, and so on).

AC Line Power Supply Requirements

Line Power Requirements

The Agilent N7744/5A Optical Multiport Power Meter complies with overvoltage category II and can operate from the single-phase AC power source that supplies between 100 V and 240 V at a frequency in the range 50 to 60 Hz. The maximum power consumption is 60 VA with all options installed.

Line Power Cable

In accordance with international safety standards, the instrument has a three-wire power cable. When connected to an appropriate AC power receptacle, this cable earths the instrument cabinet. For the part number of the power cable for your country and instrument see the “Accessories” chapter on page 49.

CAUTION

Please note that the switch on the front panel of the Agilent N7744/5A Optical Multiport Power Meter does not stop the flow of power to the instrument.

If you need to turn off the power, unplug the instrument at the mains or remove the power cable connector from the appliance coupler at the rear of the instrument. For this reason, the power cable connection should be easily accessible - allowing you to turn off the power quickly. If the instrument is in a cabinet, it must be disconnected from the line power by the system’s line power switch.

The power switch allows you to switch between stand-by mode and power-on mode.

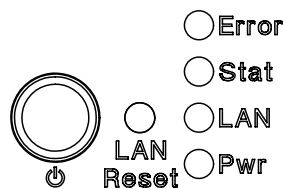


Figure 1 Agilent N7744/5A Optical Multiport Power Meter Switch

When the instrument is in stand-by mode, the Pwr LED is orange.

When the instrument is powered-on, the Pwr LED is green.

WARNING

To avoid the possibility of injury or death, you must observe the following precautions before switching on the instrument.

- Insert the power cable plug only into a socket outlet provided with a protective earth contact. Do not negate this protective action by using an extension cord without a protective conductor.
- Do not interrupt the protective earth connection intentionally.

The AC power requirements are summarized on the rear panel of the instrument.

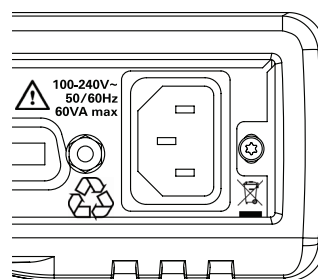


Figure 2 AC Power Requirement Markings - Agilent N7744/5A

Changing the Fuse

CAUTION

There is no user replaceable fuse for the Agilent N7744/5A Optical Multiport Power Meter. Changing the fuse should be carried out only by Agilent Technologies service personnel. If you need to get the fuse replaced refer to your nearest Agilent Technologies Sales/Service Office.

Operating and Storage Environment

The following summarizes the operating environment ranges. In order for the Agilent N7744/5A Optical Multiport Power Meter to meet specifications, the operating environment must be within these limits.

WARNING

The Agilent N7744/5A Optical Multiport Power Meter is not designed for outdoor use. To prevent potential fire or shock hazard, do not expose the instrument to rain or other excessive moisture.

Temperature

The instrument should be protected from temperature extremes and changes in temperature that may cause condensation within it.

The operating temperature for the Agilent N7744/5A Optical Multiport Power Meter is from 5°C to +40°C.

The storage temperature for the Agilent N7744/5A Optical Multiport Power Meter is from -40°C to +70°C.

Humidity

The operating humidity for the Agilent N7744/5A Optical Multiport Power Meter is 15 to 80%, non-condensing.

Altitude

The maximum operating altitude of the Agilent N7744/5A Optical Multiport Power Meter is 2000 m.

Pollution Protection

The Agilent N7744/5A Optical Multiport Power Meter is designed for pollution degree 2.

Instrument Cooling

The Agilent N7744/5A Optical Multiport Power Meter has a cooling fan mounted internally.

Mount or position your instrument upright and horizontally, as shown in Figure 3 so that air can circulate through it freely.

Operating Position

When operating the Agilent N7744/5A Optical Multiport Power Meter choose a location that provides at least 75 mm (3 inches) of clearance at the rear, and at least 25 mm (1 inch) of clearance at each side. Failure to provide adequate air clearance may result in excessive internal temperature, reducing instrument reliability. The instrument should not be operated when resting on its rear or side panels.

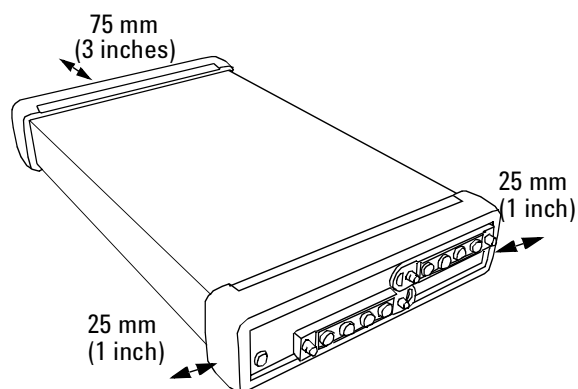


Figure 3 Correct Operating Position of the Agilent N7744/5A

Input and Output Connectors

Front and Rear Panels

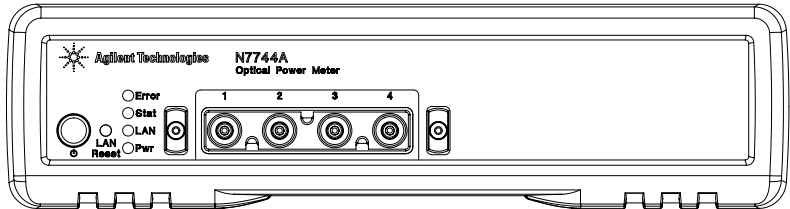


Figure 4 The Agilent N7744A 4-Channel Optical Multiport Power Meter front panel

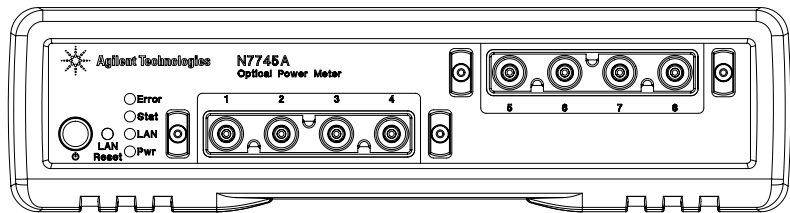


Figure 5 The Agilent N7745A 8-Channel Optical Multiport Power Meter front panel

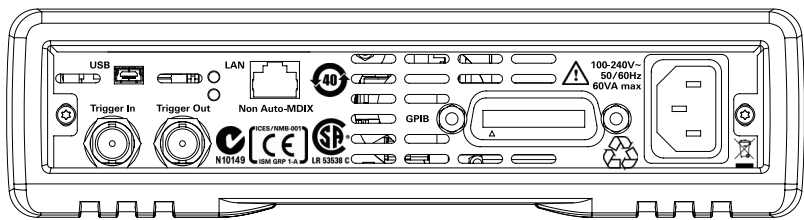


Figure 6 The Agilent N7744/5A Optical Multiport Power Meter rear panel

Making Optical Connections

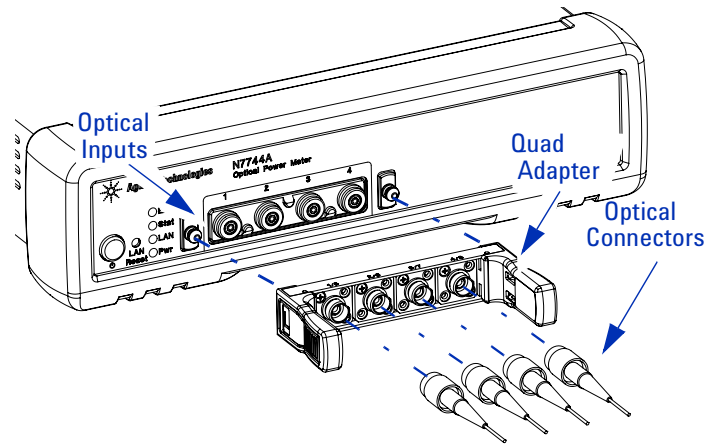


Figure 7 Connecting Optical Fibers

NOTE

Before you attach a quad-adapter or fiber, you should make sure they are clean. This is important for accurate measurements.

The fibers do not contact the optical inputs (all contact with the optical inputs should be avoided). Usually the only cleaning necessary for the optical inputs is the gentle removal of dust with pressurized, dry air.

For further information see "[Cleaning Instructions](#)" on page 67.

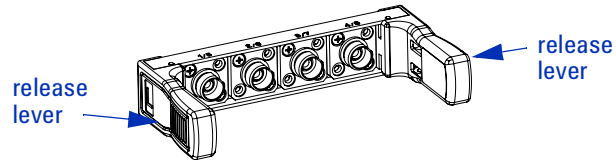
To use a quad-adapter to connect optical fibers to the power meter inputs:

- 1 Select the quad-adapter that suits the optical connector that your optical fiber is terminated with.
- 2 Attach the optical connectors to the quad-adapter.
You can attach up to 4 fibers to the quad-adapter at the same time.
- 3 Make sure the number labels on the quad-adapter are at the top.
- 4 Connect the quad-adapter to the optical inputs, see Figure 7, by pressing it on until it clicks securely into place.

Removing Optical Interfaces

NOTE

There are release levers on both sides of the quad-adapter for removing it from the optical inputs.



- 1 Press the release levers on both sides of the quad-adapter to release it from the front panel of the power meter.
- 2 You can now remove the optical connectors from the quad-adapter.

NOTE

Always place the dust cap on unused connector interfaces.

You can use the quad-adapter dust caps to protect the four power meter inputs and the rear of the quad-adapter, for example, when fibers are attached.

Electrical Connectors

There are two BNC connectors on the rear panel of your instrument. These are the Trigger Out and the Trigger In connectors.

CAUTION

The Trigger In, see Figure 6, is a TTL input. A maximum of 5 V can be applied as an external voltage to this input connector.

The Trigger Output, see Figure 6, is the only output BNC connector. This is a TTL output. Do not apply an external voltage to this connector.

LAN Interface

Selecting a LAN Network

For the purposes of this guide, a private (isolated) LAN network is defined as a network configuration in which instrument access is a direct connection between the computer and the instrument, or to multiple instruments connected via a *dedicated* router or switch. A site (company-wide) LAN is defined as a network in which instrument access is available to

many users at on-site and remote locations. The instrument's application and/or your company's IT (Information Technology) department may have guidelines that help decide the type of network (private or site) used. If a network configuration has not been determined, refer to the following considerations concerning each type.

Private LAN Considerations

Among the basic parameters of a private LAN network to consider are security, performance, reliability, and IP address availability.

Security A private network generally involves a direct connection between the computer and the instrument, or to multiple instruments using switches or routers. Access to the instrument is limited to users on the private network, as opposed to users on a site network that could locate and access the instrument from any location.

Private networks can reduce the possibility of tests being disrupted by unplanned or unauthorized access. Code generation for test systems on a private network is often simplified, as provisions against unauthorized users may not be required.

Performance Test systems where large amounts of data are transferred usually have faster throughput on a private network. On a site network, heavy and unpredictable LAN traffic affects each instrument (node) on the network.

The impact on a test system is that repeatability is difficult to achieve as latencies are difficult to account for.

Reliability Private networks are fundamentally more reliable than site networks as they host fewer users and are less complex than site networks.

Private networks are isolated from conditions that could bring down (crash) a site network.

IP Address Availability Every instrument (node) on a LAN (private or site) has an IP (Internet Protocol) address. Due to the expanding use of the internet, the number of site network IP addresses available is limited. By using a router with Dynamic Host Configuration Protocol (DHCP) capability on a private network, the router can assign an IP address to each instrument thus creating a sub-network (subnet) that does not consume site IP addresses.

Site LAN Considerations

For applications requiring access by many users or by users at distributed sites, a site LAN network is required. In addition to supporting multiple users, site LANs often offer the advantage of being maintained by IT departments. When using a site LAN, consult your IT department regarding LAN configuration and security issues.

Connecting the LAN Cable

LAN cables are connected between the LAN terminal on the instrument and the computer, or between the instrument and a router or switch if included in your network.

Private Network Connections Figure 8 shows typical LAN cable connections for a private network.

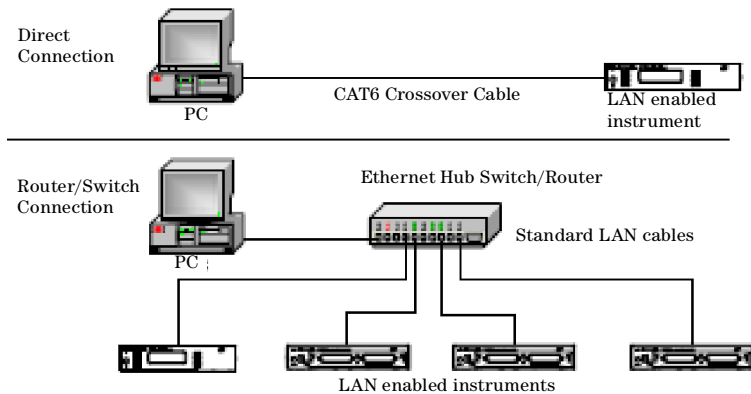


Figure 8 Typical Private (isolated) LAN Network Connections.

If the Agilent N7744/5A power meter is connected directly to the PC, use a LAN crossover cable, as provided with the instrument. If your computer supports Auto-MDIX or contains a LAN card with gigabit data transfer rates, the (blue) crossover cable is not required. A standard LAN cable can be used instead.

For private LAN networks that include a switch or router, use standard LAN cables for all network connections. Do not use a crossover cable.

Site Network Connections Figure 9 shows a typical LAN cable connection for a site network.

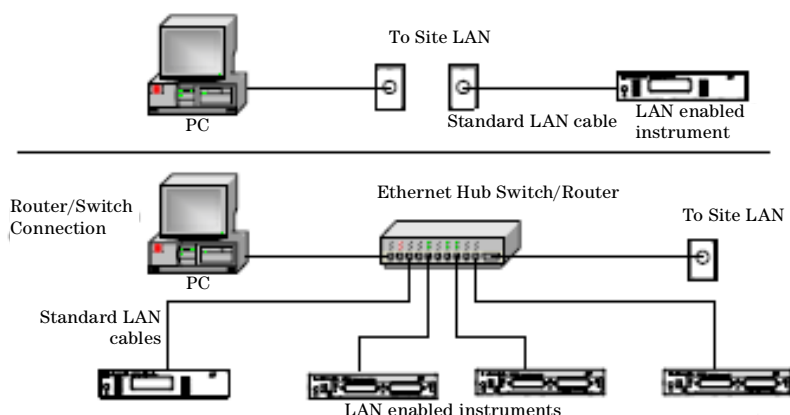


Figure 9 Typical Site LAN Network Connections.

On site networks, the Agilent N7744/5A and the computer are connected directly to site LAN ports, or are connected to the site LAN through a switch. In each site network configuration, standard LAN cables are used.

The LAN LED As the LAN connection is made, the DHCP server assigns an address and the LXI device identification proceeds you will see the following indicators;

| No LAN link | LAN link No IP Address | LAN link | LXI Device identification |
|-------------|---------------------------|-----------|------------------------------|
| Red LAN | Yellow LAN | Green LAN | Green LAN blink |

There may be a delay between making the LAN link (yellow status) and getting the IP address (green status). This delay may be longer if there is no DHCP server, for example when the Agilent N7744/5A is connected directly to a PC.

GPIB Interface

You can connect your GPIB interface into a star network, a linear network, or a combination star and linear network. The limitations imposed on this network are as follows:

- The total cable length cannot exceed 20 meters
- The maximum cable length between devices is 4 meters, with an average separation of 2m between devices over the whole bus.
- No more than 15 devices may be interconnected on one bus.

Cables and Adapters

See “Cables” on page 50 for details on cables and adapters.

Connector

The following figure shows the connector and pin assignments.

Connector Part Number: 1251-0293

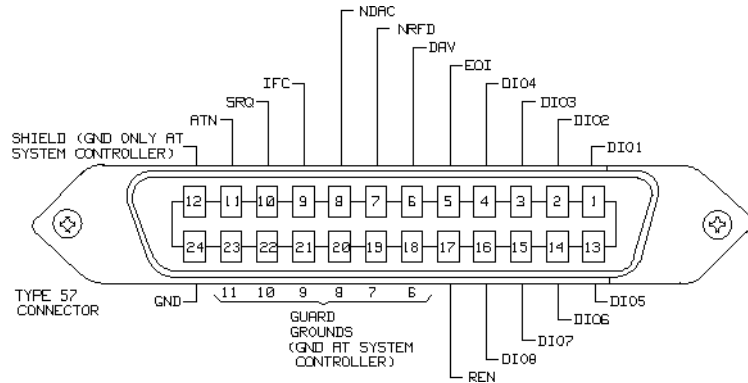


Figure 10 GPIB Connector

CAUTION

Agilent Technologies products delivered now are equipped with connectors having ISO metric-threaded lock screws and stud mounts (ISO M3.5×0.6) that are black in color. Earlier connectors may have lock screws and stud mounts with English-threaded lock screws and stud mounts (6-32 UNC) that have a shiny nickel finish.

CAUTION

It is recommended that you do not stack more than three connectors, one on top of the other.

Hand-tighten the connector lock screws. Do not use a screwdriver.

GPIB Logic Levels

The instrument’s GPIB lines use standard TTL logic, as follows:

- True = Low = digital ground or 0 Vdc to 0.4 Vdc
- False = High = open or 2.5 Vdc to 5 Vdc

All GPIB lines have LOW assertion states. High states are held at 3.0 Vdc by pull-ups within the instrument. When a line functions as an input, it requires approximately 3.2 mA to pull it low through a closure to digital ground. When a line functions as an output, it will sink up to 48 mA in the low state and approximately 0.6 mA in the high state.

NOTE

The GPIB line screens are not isolated from ground.

USB Interface**NOTE**

Before connecting the instrument over USB, install the Agilent I/O Libraries Suite, which is included on a CD with the instrument.

The power meter is a USB device, with a mini-USB connector.

Powering Up the Instrument

When you switch on the power meter, the LEDs on the front panel show the various stages of booting.

| Standby | Power On | FPGAs loaded | Analog Board 1 loaded | Analog Board 2 loaded |
|-------------------|---------------------|--------------------|-----------------------|-----------------------|
| Error | Yellow Error | Green Error | Green Error | Green Error |
| Stat | Yellow Stat | Yellow Stat | Green Stat | Green Stat |
| LAN | Yellow LAN | Yellow LAN | Yellow LAN | Green LAN |
| Yellow Pwr | Green Pwr | Green Pwr | Green Pwr | Green Pwr |

Front Panel Indicators

During operation, you may notice the following LED indicators:

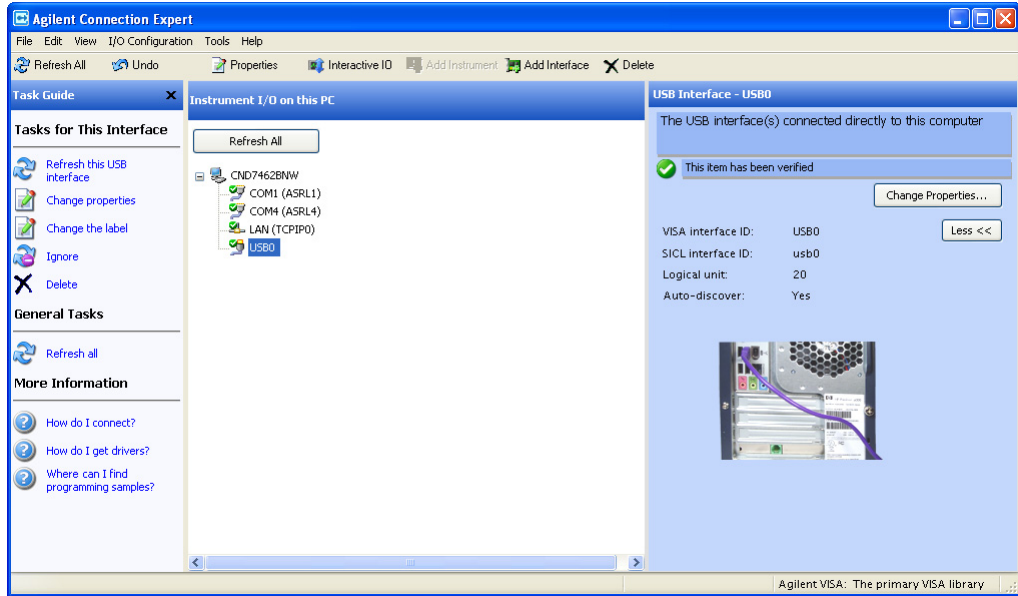
| | |
|--------------------------------|--------------------|
| | Hardware defect |
| Red | Error |
| LAN, USB or GPIB communication | Zeroing |
| Green blink Stat | Yellow Stat |

Connecting to the Instrument

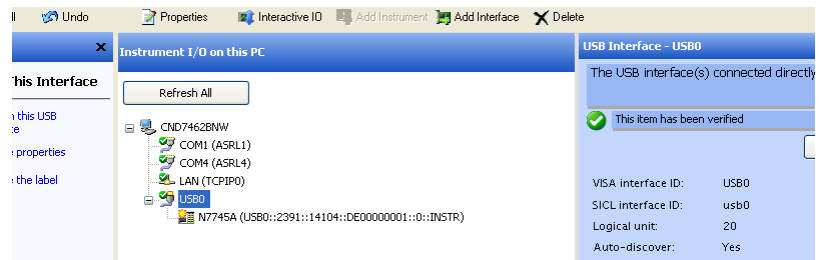
When you are first connecting the instrument, we recommend you use the Agilent Connection Expert included with the Agilent I/O libraries (available on the CD supplied with the instrument, or from www.agilent.com).

Connecting over USB

- 1 If it is not already running, start the Agilent Connection Expert software.



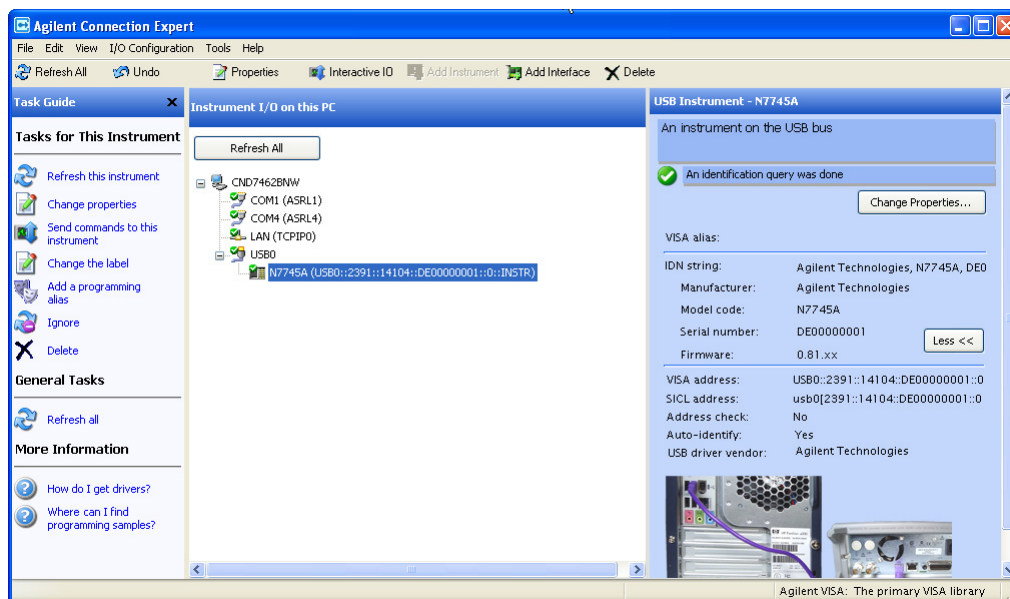
- 2 Attach the instrument to the USB.
The first time you attach an Agilent N7744A or Agilent N7745A Optical Multiport Power Meter, follow the instructions on the screen to select the driver for this instrument.
When the instrument is connected, it is shown in the list.



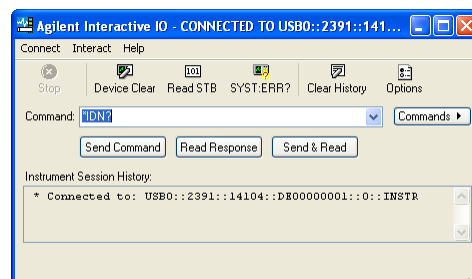
- 3 Select the instrument in the list to see the associated tasks (in the Task Guide on the left) and information (on the right).

Finding the IP Address of an instrument

- 1 Connect to the instrument over USB.
- 2 Select the instrument in the list.

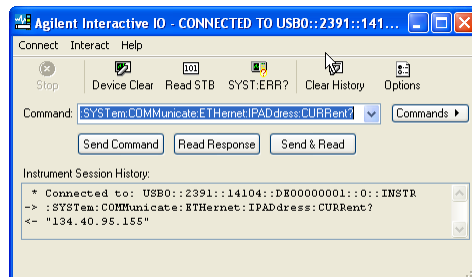


- 3 Click on “Send commands to this instrument”.
The default command is the *IDN? query.



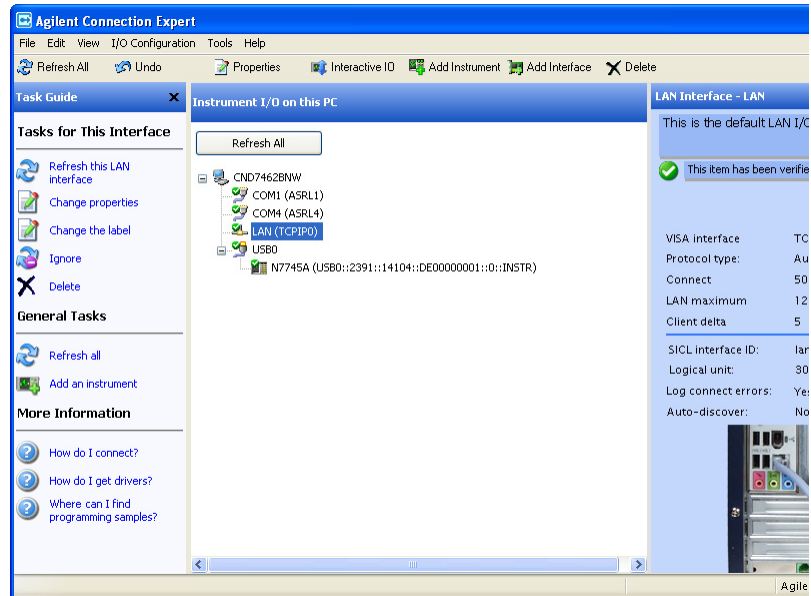
- 4 Enter the command
:SYSTem:COMMunicate:ETHeRnet:IPADdress:CURRent?
then click on [Send & Read].

The instrument returns its current IP address.



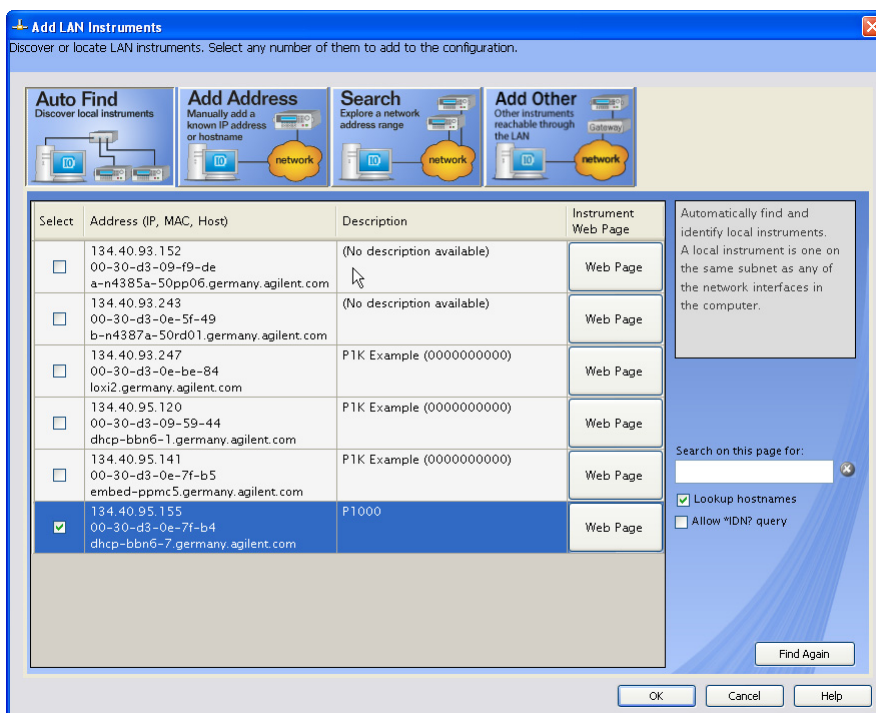
Connecting over LAN

- 1 Make sure the instrument is connected to the LAN, and that the LAN LED on the front panel is green.
See “[LAN Interface](#)” on page 20 for more information to connecting over LAN.
- 2 If it is not already running, start the Agilent Connection Expert software.
- 3 Select “LAN (TCPIP0)” in the list.



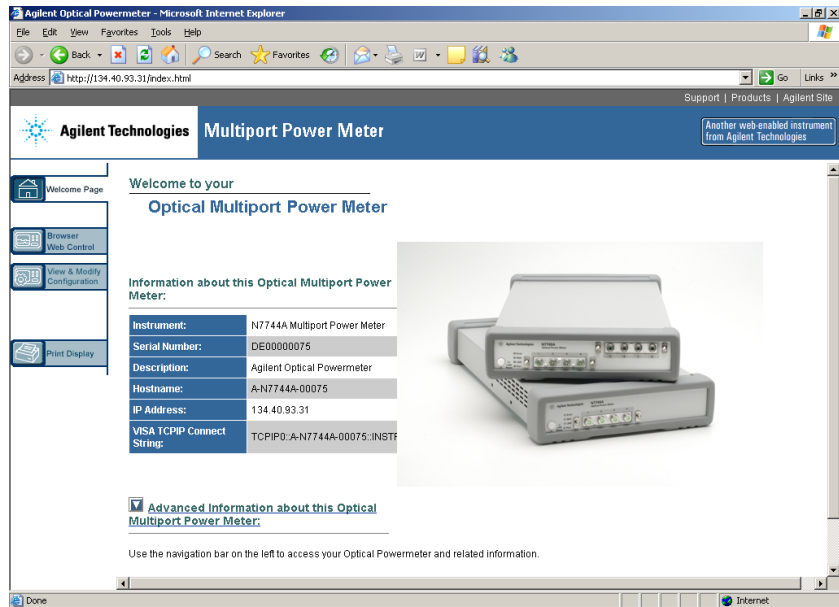
- 4 Click on “Add an instrument” in the Task Guide.
- 5 Wait for the scan to finish.

6 Select the instrument in the list.



7 Select the instrument in the list to see the associated tasks (in the Task Guide on the left) and information (on the right).

Click on [Instrument Web Interface] to control the instrument directly.



If it is not already installed, you will need to install a Java run-time engine to use this page.

Basic configuration and functionality are available from this web page.

More advanced functionality is available through programming with SCPI commands (described in the Programming Guide available on the CD supplied with the instrument or from www.agilent.com), or using the VXI plug&play Driver version 4.1.5 (or higher) for 816x power meters.

Claims and Repackaging

If physical damage is evident or if the instrument does not meet specification when received, notify the carrier and the nearest Agilent Technologies Sales/Service Office. The Agilent Technologies Sales/Service Office will arrange for repair or replacement of the unit without waiting for settlement of the claim against the carrier.

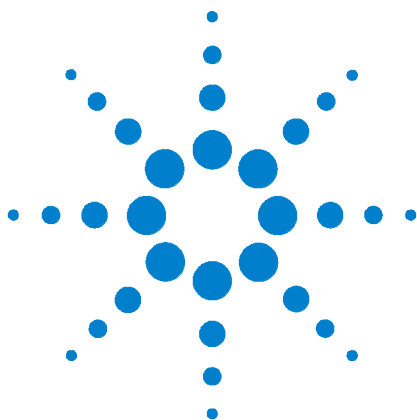
Return Shipments to Agilent Technologies

If the instrument is to be shipped to an Agilent Technologies Sales/Service Office, attach a tag showing owner, return address, model number and full serial number and the type of service required.

The original shipping carton and packing material may be reusable, but the Agilent Technologies Sales/Service Office will provide information and recommendations on materials to be used if the original packing is no longer available or reusable. General instructions for repackaging are as follows:

- Wrap instrument in heavy paper or plastic.
- Use strong shipping container. A double wall carton made of 350-pound test material is adequate.
- Use enough shock absorbing material (3 to 4 inch layer) around all sides of the instrument to provide a firm cushion and prevent movement inside container. Protect control panel with cardboard.
- Seal shipping container securely.
- Mark shipping container FRAGILE to encourage careful handling.
- In any correspondence, refer to instrument by model number and serial number.

1 Getting Started



2 Power Measurement

This chapter describes how to use the Agilent N7744A/N7745A Optical Multiport Power Meter to measure optical power.

Controlling the Optical Multiport Power Meter 34

How to change the settings of the Optical Multiport Power Meter 35

How to Measure Power 37

The Power Value 37

How to Set the Power Unit 37

How to Set the Calibration Offset 38

How to Set the Reference Level 38

How to Set the Wavelength 40

How to Remove Electrical Offsets (Zero) 40

How to Choose the Range Mode 41

How to Set the Range 41

How to Set the Averaging Time 42

How to Choose the MinMax Mode 42

How to Use External Triggers 43



Controlling the Optical Multiport Power Meter

There are different possibilities to control the instrument:

- LAN Connection: [Instrument Web Interface]
- LAN / USB / GPIB Connection: [MPPM Viewer]
- LAN / USB / GPIB: Programming with SCPI commands (described in the Programming Guide available on the CD supplied with the instrument or from www.agilent.com), or associated drivers, including the 816x VXI Plug&Play driver.

To connect to the instrument see “Input and Output Connectors” on page 18.

The Browser Web Control of the [Instrument Web Interface] is shown in Figure 11.

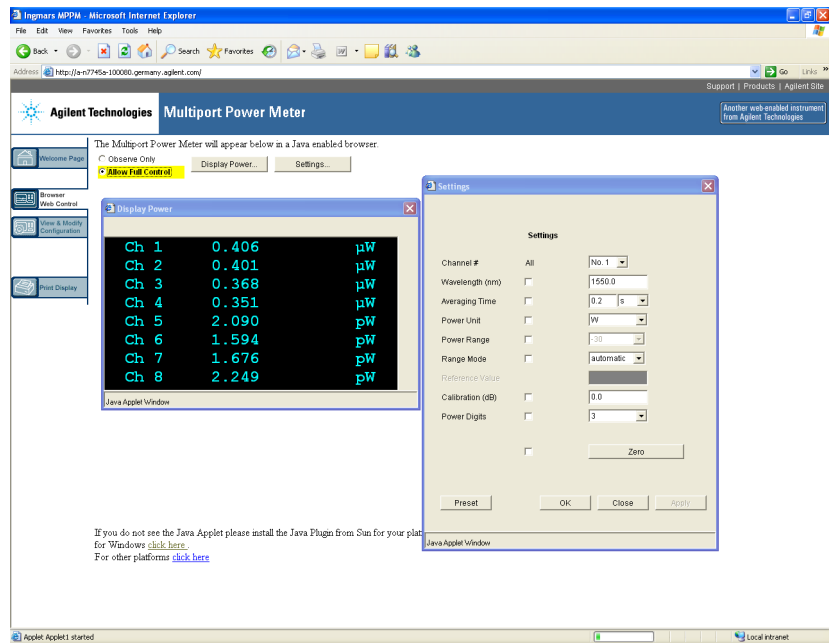


Figure 11 The Browser Web Control

The MPPM Viewer is shown in Figure 12.

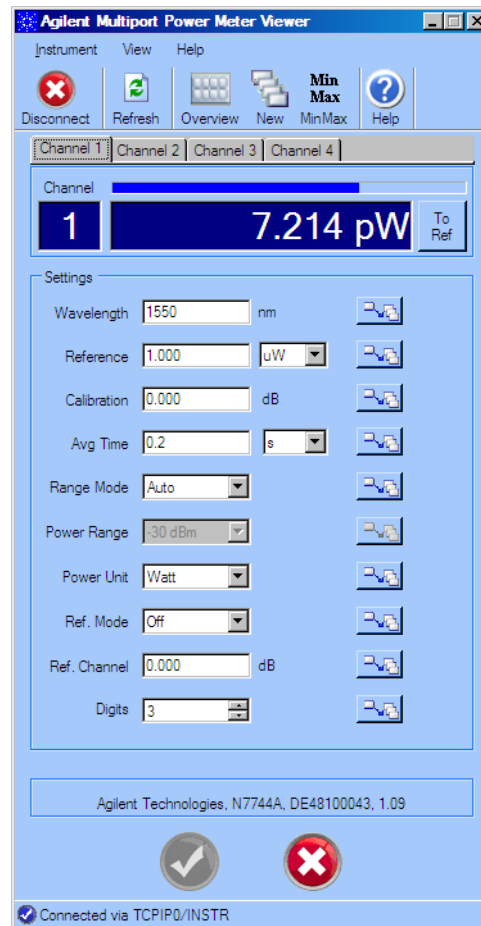


Figure 12 The MPPM Viewer

How to change the settings of the Optical Multiport Power Meter

To change the settings of the Optical Multiport Power Meter you must select the [Allow Full Control] button from the Browser Web control window. Now you are able to change the settings (see [Figure 13](#)) of the Optical Multiport Power Meter.

The changes are made when you press the "Apply" button. If you selected the "All" checkbox, the setting is applied to all ports.

To quickly and reproducibly set the measurement parameters, use the Measurement Settings buffers. These let you save and recall sets of settings with single programming commands. For further details, refer to “Handling Measurement Settings - The :CONFigure:MEASurement:SETTing subtree“ in the Programming Guide.

2 Power Measurement

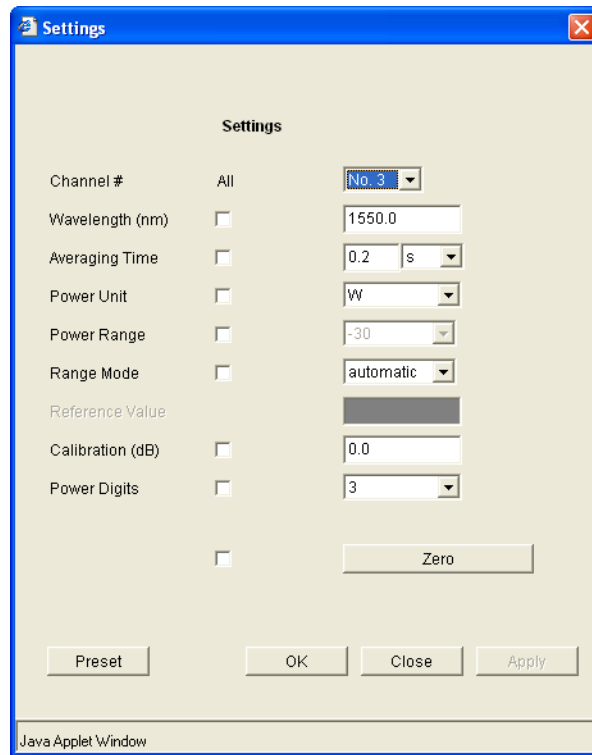


Figure 13 Settings of the Optical Multiport Power Meter

How to Measure Power

The Power Value

For each port, the optical power is measured and returned or displayed. The power reading represents the average optical power over the selected averaging time. The power meter can continuously self-trigger new measurements or be configured to wait for external software or hardware triggers.

How to Set the Number of Digits

When the power is displayed with the Web Interface or the Viewer program, you can set the maximum number of digits that are used in power measurement. This is the maximum number of digits after the decimal point.

How to Set the Power Unit

The Power Unit setting allows you to select either W, dBm or dB as the units in which power is displayed or returned. For returning large amounts of logged data, the fastest data transfer is achieved using W units.

What are the Power Units ?

Watts (W) are the SI unit for power measurement.

You can also measure power in dB or dBm. Values returned in these units are derived from measurement in Watts.

By selecting dBm, the following calculation is made:

$$P_{dBm} = 10 \log \frac{P_{input}(W)}{1 \times 10^{-3}(W)}$$

Where,

P_{dBm} is the power value returned in dBm, and

P_{input} is the input signal level in Watts.

Power, in units of dBm, is measured relative to 1 mW. It is an absolute power measurement.

Power, in units of dB, is measured relative to a particular reference power value. For information on selecting this reference value, see “How to Input a Reference Level” on page 38.

The following calculation is made:

$$P_{dB} = 10 \log \frac{P_{input}(W)}{P_{ref}(W)}$$

Where,

P_{dB} is the power value returned in dB,

P_{input} is the input signal level in Watts, and

P_{ref} is the chosen reference power value in Watts.

How to Set the Calibration Offset

This is a calibration offset that you can enter to compensate for external optical circuitry, for example, an attenuator, switch, or a 3 dB coupler. The calibration offset, [*Cal*], is automatically subtracted from the input signal, as expressed in dB.

$$P_{measured}(dBm) = P_{input}(dBm) - CAL(dB)$$

where,

$P_{measured}$ is the adjusted value of the signal read in dBm,

P_{input} is the input signal level in dBm, and

CAL is the calibration offset in decibels (dB).

How to Set the Reference Level

How to Input a Reference Level

dB results are shown relative to a reference level. Setting, or changing, the reference only affects results that are returned in dB.

You can set the reference level in units of dBm or Watts. Depending on which is selected the following equations are used to calculate the power level in dB:

$$P_{dB} = P_{measured}(dBm) - REF(dBm)$$

or

$$P_{dB} = 10 \log \frac{P_{measured}(W)}{REF(W)}$$

where,

P_{dB} is the returned relative power,

$P_{measured}$ is the absolute power level (see “How to Set the Calibration Offset” on page 38), and

REF is the reference level.

How to Set the Reference Value to the Current Power Value

In addition to entering a new reference value, you can change the reference value to the current power value from the MPPM Viewer or by programming..

This takes the input power level and stores it as the reference. Setting the reference only affects results returned in dB.

The power value in dBm or Watts is stored as the reference, that is:

$$REF = P_{measured}$$

where,

REF is the reference, and

$P_{measured}$ is the absolute power level (see “How to Set the Calibration Offset” on page 38).

How to Reference Another Power Measurement Port

You can use the reference mode to reference to another port’s current power level. If you choose this mode, the reference of the port continuously updates to the current power value measured by the other port.

The following equations describe how the power in dB is calculated if you reference another port:

$$P_{dB} = P_{measuredA}(dBm) - P_{measuredB}(dBm) - REF(dB)$$

or

$$P_{dB} = 10 \log \frac{P_{measuredA}(W)}{P_{measuredB}(W)} - REF(dB)$$

where:

P_{dB} is the relative power,

$P_{measuredA}$ is the absolute power level (see “How to Set the Calibration Offset” on page 38) measured by the current port, and

$P_{measuredB}$ is the absolute power level (see “How to Set the Calibration Offset” on page 38) measured by the port you choose to reference, and

REF is the reference level in decibels (dB).

How to Set the Wavelength

This is the wavelength value of the signal to be measured. The responsivity of the Power Meter varies with wavelength.

For accurate absolute power measurement, you need to input the wavelength of the optical input.

For relative power measurements, this setting is not critical.

How to Remove Electrical Offsets (Zero)

Optical Power Meters measure optical power by converting optical power to electrical current, and then measuring electrical current. An electrical offset is electrical current that is always present, even if there is no optical power input. If electrical offsets are not removed, they affect the accuracy of power measurement, especially at low optical power levels.

Performing a zero sets the zero power level to the average electrical offset level for the current environmental conditions.

NOTE

The environmental conditions and the temperature of the instrument affect electrical offset.

For the best results you must:

- Allow the instrument time to acclimatize (around 24 hours).
- Allow the instrument time to warm up (around 20 minutes).
- Make sure that the optical input is not receiving any light or use the zeroing adapter. If you are using multi-mode fiber-optic cable, you must disconnect the cable and cover the input to the Power Meter to perform a zero.

It is good practice to perform a zero before making any sensitive measurements.

Logging data over a wide dynamic range is a typical case that requires a valid zero setting.

When environmental conditions are stable, the zero setting will remain valid over long times and the same settings will be active after rebooting the instrument.

If you receive a zero error, the zeroing operation has failed because the Power Meter received light. The most common reason for zeroing to fail is if:

- a source is connected to the Power Meter's input connector,
- the fiber connected to the Power Meter's input connector is collecting light, or
- the Power Meter receives ambient light because the input connector is uncovered.

How to Choose the Range Mode

You can choose either of two ranging modes:

- *<Auto>*, the auto-ranging mode, ensures that the result has a returned value between 9% and 100% of full scale. The default state is for automatic ranging to be enabled.
- *<Manual>*, which allows you to set a user-defined range.

How to Set the Range

The range setting determines the power levels that can be measured. The setting should be high enough for the applied power, but lower settings will provide a lower noise level for weak signals.

If you choose auto-ranging mode, this parameter can not be set. The Range parameter returns the automatically-determined range.

If the measured power is more than 3dB greater than the range setting, the power cannot be measured and an overflow is indicated by the returned power value. This means that the measured power is greater than the Upper Power Limit. You must increase the [*Range*] value.

See Table 1 on page 42 for more details.

Upper Power Limit

Table 1 shows the upper power limit at the available power ranges. The lowest measurable power in each range is determined by the noise level, as indicated in the specifications.

Table 1 Upper Power Limits for Various Power Ranges

| [RANGE] | Upper Power Limit | |
|---------|-------------------|-------------|
| 10 dBm | 10.000 mW | 10.000 dBm |
| 0 dBm | 1.9999 mW | 3.000 dBm |
| -10 dBm | 199.99 μ W | -7.000 dBm |
| -20 dBm | 19.999 μ W | -17.000 dBm |
| -30 dBm | 1.9999 μ W | -27.000 dBm |

How to Set the Averaging Time

This is the length of time over which a signal is averaged to produce a measured value. Longer averaging times increase the accuracy and improve the noise rejection.

The averaging time of the N7744A and N7745A can be set over a wide range from 1 μ s to 10s.

Up to 2 ms, the setting can be varied with a typical resolution of 2 μ s, and for higher averaging times the setting resolution is about 0.1%.

This flexible setting time supports optimal synchronization with the time scale of the signals.

The high sampling rate with short averaging times is supported by the high cutoff frequency, as shown in the specifications. These bandwidths are reduced in steps, when longer averaging times are used to improve the noise performance while maintaining signal fidelity.

How to Choose the MinMax Mode

MinMax mode measures the incoming power and returns the minimum value measured, and the maximum value measured. The difference between these values, ΔP , is returned in place of P, the power value. This mode is intended principally for polarization dependent measurements, but can be used for other types of measurement.

The Min/Max mode can be activated from both the Web Control Interface and the MPPM Viewer, as well as with direct programming described in the Programming Guide. You can choose two modes of operation from the MinMax mode menu:

- *<Continuous>* mode, which compares each new measured value with the maximum and minimum values so far, and replaces them as necessary.
This mode is useful for measuring the Polarization Dependent Loss (PDL) of a component. Run the application while sweeping the polarization of the source applied to the component.
- *<Refresh>* mode, which records the minimum and maximum values until N samples have been compared. After N samples the minimum and maximum values are reset and a new MinMax measurement begins.
You can use Refresh mode, for example, when you are searching for or setting the position of minimum PDL.

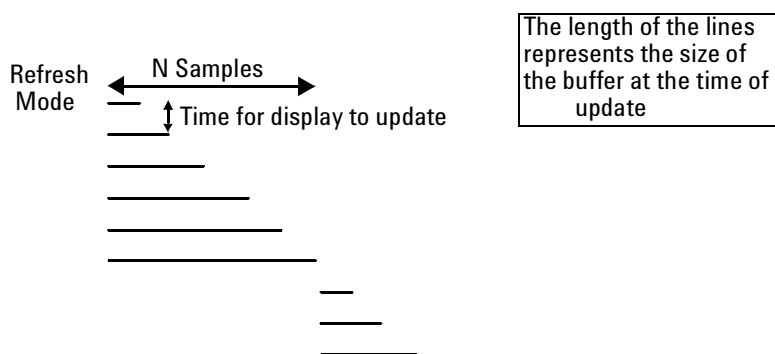


Figure 14 Refresh Mode

NOTE

Window mode is not currently implemented in the N7744A and N7745A. For compatibility with existing software it can be selected but functions the same as Refresh mode.

How to Use External Triggers

The Agilent N7744A / N7745A Optical Multiport Power Meter lets you trigger the instrument to perform tasks and to output trigger signals to external measurement instruments using the rear panel BNC connectors.

How to Set the Trigger Configuration

By default, the trigger level at the external trigger connector is active high. This means when a trigger rises above the high TTL level (rising edge), a trigger is accepted.

You can select three modes of triggering from the trigger configuration menu:

- *<Disabled>*, if you do want to disable triggering.

- <Default> to enable the trigger connectors.
- <Pass Through> if you want an input trigger to automatically generate an output trigger. This lets you trigger another instrument almost simultaneously.

See the Agilent N7744A / N7745A Multiport Power Meter Programming Guide, in the chapter “Triggering - The TRIGGER Subsystem”.

Input trigger functions

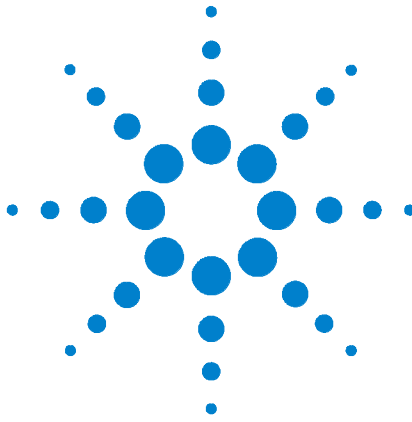
The power meter ports can be configured individually to respond to an input trigger by:

- <Ignore> The trigger is ignored.
- <Single Measurement> The trigger causes a single power measurement to be made.
- <Complete Measurement> The trigger will cause an active measurement function like logging to begin and continue until completed.

Output trigger functions

The power meter ports can be configured individually to generate output triggers for the following events:

- <Disabled> No triggers are generated.
- <Meas. started> An output trigger is generated when a power measurement begins.
- <Avg Time Over> An inverted trigger is generated for each measurement sample.



3 Applications

This chapter explains how to set up and perform the following applications using the N7744A or N7745A Optical Multiport Power Meter.

- The Logging application logs power measurements. The Logging application performs measurements consecutively without the possibility of any pause between measurements.
- The Stability application logs power measurements. The Stability application differs from the Logging application because:
 - the period time, the time it takes from the start of one measurement period until another measurement period starts, may be greater than or equal to the averaging time.

These applications can be accessed with programming commands as described in the Programming Guide.

The Logging Application 46

The Stability Application 47



The Logging Application

The Logging Application logs a series of power measurements for a number of power meter ports.

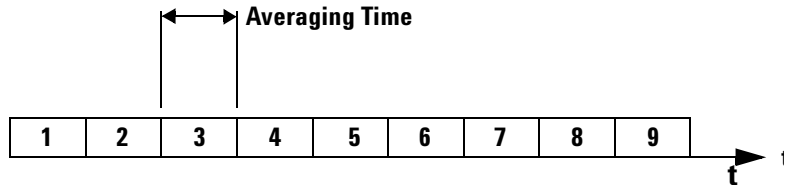


Figure 15 Example Logging Application

The most important parameters for the logging application are:

- [*Samples*], this is the number of samples that will be performed during the logging application, and
- [*AvgTime*], the averaging time is the length of time over which a signal is averaged. Longer averaging times increase the accuracy and improve the noise rejection. Longer averaging times also improve sensitivity.

The total time for a logging application is the number of samples multiplied by the averaging time. The power range is constant during a logging application and autoranging is disabled.

The Logging application differs from the “The Stability Application” on page 47 because all power measurements are performed consecutively without the possibility of any pause between measurements, as shown in Figure 15.

While performing the logging application all used ports of the N7744A / N7745A Multiport Power Meter will have the same averaging time and number of samples. Setup parameters for each of the ports should be set before the logging is started on any port.

The logging function is often used together with single-measurement input triggering for synchronized measurement with another instrument, especially for spectral measurements with a tunable laser.

The Stability Application

The Stability Application logs a series of power measurements for a number of power meter ports.

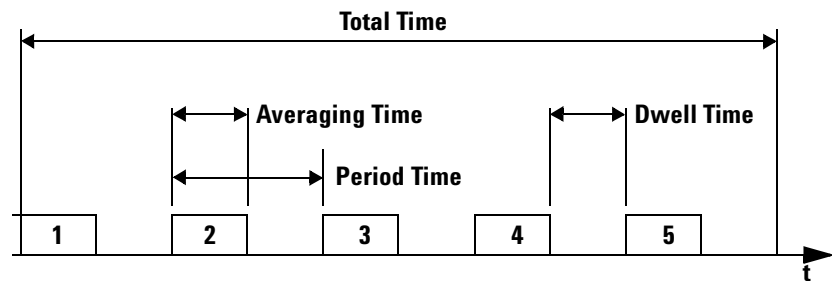


Figure 16 Example Stability Application

The Stability application differs from the “The Logging Application” on page 46 because you set the averaging time, the total time, and the period time after which each new measurement is started. Period time must be greater than or equal to the averaging time you set.

This leaves the following two possibilities:

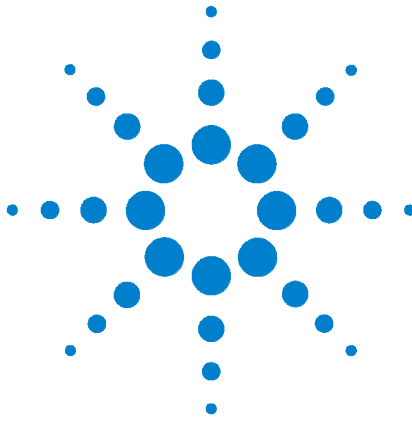
- The averaging time is less than the period time, there is a dwell time between the commencement of each power measurement, as shown in Figure 16.
- The averaging time is equal to the period time, all power measurement are performed without any dwell time.

NOTE

The total time concludes after the last dwell time period, not after the last averaging time period.

The Stability application enables you to make periodic power measurements over a long time (277 hours (11 days and 13 hours)).

3 Applications



4 Accessories

The Agilent N7744/5A Optical Multiport Power Meter is available in various configurations for the best possible match to the most common applications.

This appendix provides information on the available options and accessories.

Instrument and Options - Agilent N7744A, N7745A, N7740A 50

Cables 50



Instrument and Options - Agilent N7744A, N7745A, N7740A

Instrument and Options

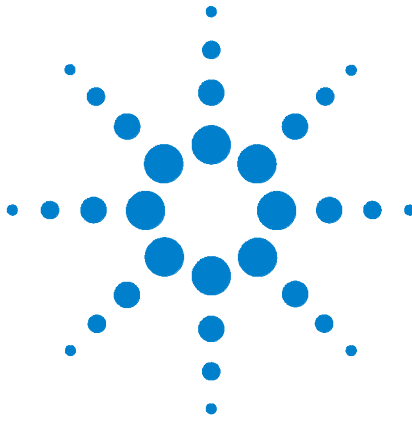
| Product | Description |
|------------|---|
| N7744A | 4-Port Optical Multiport Power Meter |
| N7745A | 8-Port Optical Multiport Power Meter |
| N7744A-100 | Rack Mount Kit One rack mount kit allows for rack mounting one or two N7744A or N7745A in the front or rear of a rack. Height is 1U. |

Adapters and bare fiber holders

| Product | Description |
|-------------|---|
| N7740FI | FC quad-adapter |
| N7740KI | SC quad-adapter |
| N7740LI | LC quad-adapter |
| N7740MI | MU quad-adapter |
| N7740ZI | blank quad-adapter for zeroing |
| N7740BI | bare fiber quad-adapter |
| 81004BM | bare fiber holder set for 0 - 400 μ m (4 each with gauge) |
| 81009BM | bare fiber holder set for 400 - 900 μ m (4 each with gauge) |
| 81004BH | 10 bare fiber holder for 0 - 400 μ m |
| 81009BH | 10 bare fiber holder for 400 - 900 μ m |
| N7740-44100 | quad-adapter dust cap |

Cables

- GPIB Cable, 10833A, 1 m (3.3 feet)
- GPIB Cable, 10833B, 2 m (6.6 feet).
- GPIB Cable, 10833C, 4 m (13.2 feet)
- GPIB Cable, 10833D, 0.5 m (1.6 feet)
- GPIB Adapter, 10834A, 2.3 cm extender. Use this adapter if there is no space to connect your GPIB cable directly to a GPIB interface.
- USB Cable, 8121-1243, 2 m (6.6 feet)
- Cross-over LAN cable, 5061-0701, 2.1 m (7 feet)



5 Specifications and Regulations Compliance

The Agilent N7744/5A Optical Multiport Power Meter is produced to the ISO 9001 international quality system standard as part of Agilent Technologies' commitment to continually increasing customer satisfaction through improved quality control.

Specification (guaranteed): describes a guaranteed product performance that is valid under the specified conditions. Specifications are based on a coverage factor¹ of 2 (unless otherwise stated), corresponding to a level of confidence of >95%.

Typical values (characteristics): a characteristic describing the product performance that is usually met but not guaranteed.

Generally, all specifications are valid at the stated operating and measurement conditions and settings, with uninterrupted line voltage.

Definition of Terms 52

Declarations of Conformity 62

Regulations Information 63

EMC Canada 63

Remove all doubt 64

¹ Guide to the Expression of Uncertainty in Measurement", ISO/IEC Guide 98:1995.



Definition of Terms

Averaging Time

Specifies the period during which the power meter takes readings from the photodetector. The displayed power result is the (arithmetical) average of these readings.

Applicable fiber type

Connection type for which the specifications and characteristics apply (if not differently stated).

Data logging capability

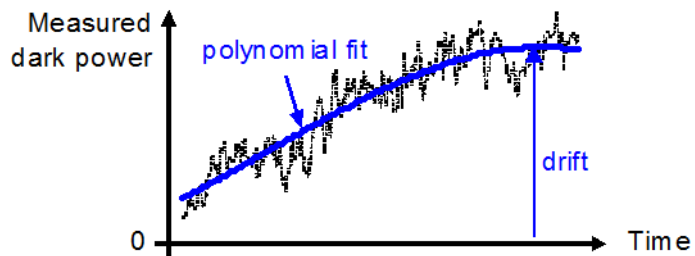
Maximum number of power readings per port that can be captured during a logging operation.

Drift (dark)

Specifies the maximum deviation from zero of the measured power with no optical input (dark) over time, excluding “Noise pp (dark)”, power expressed in Watts.

Measurement: From the dark measurement result P_i , the 3rd order polynomial fit F_i is calculated. The fit incorporates the least square-sum difference. The Drift D is calculated by

$$D = \max_i\{F_i\} \text{ or } \min_i\{F_i\}, \text{ which ever is worse.}$$



Conditions: All ports dark. Observation time as specified. Other conditions as specified.

Dynamic range (logging mode)

For a fixed power meter range, dynamic range D specifies the difference between the maximum displayable value P_{max} in dBm in the corresponding power meter range and the minimum measurable power P_{min} in dBm.

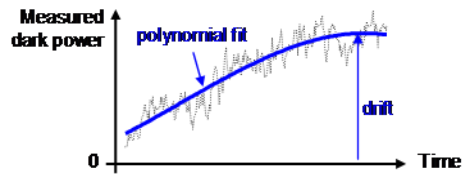
Conditions: As specified.

Measurement: P_{max} is 3 dB above the nominal power meter range value (that is, in the +0 dBm power meter range P_{max} is +3 dBm), except for the +10 dBm range with $P_{max} = +10$ dBm. $P_{min,dBm}$ is calculated as the root-sum-square (RSS) of the specified “Noise 2 sigma (dark)” and “Drift (dark)”. RSS is calculated in linear units (Watts).

Frequency response

Specifies the frequency f_{resp} up to which the power meter's transfer function is above a defined cutoff level.

The transfer function is the measured optical amplitude on a modulated sinusoidal optical input divided by the actual amplitude over modulation frequency, expressed in dB.



Conditions: Cutoff level as specified. Other conditions as specified.

Linearity

Specifies the relative difference between the measured (displayed) power ratio D_x/D_0 and the actual (true) power ratio P_x/P_0 , caused by changing the power level from the reference level P_0 to an arbitrary level P_x .

Powers expressed in Watts.

Excluding “Noise pp (dark)” and “Drift (dark)”.

$$L_{\%} = \left(\frac{D_x/D_0}{P_x/P_0} - 1 \right) \text{ when expressed in \%}$$

$$L_{dB} = 10 \log \left(\frac{D_x/D_0}{P_x/P_0} \right) \text{ when expressed in dB}$$

Conditions: Reference power level $P_0 = 0.01$ mW (-20 dBm). Other conditions as specified.

Maximum safe power

The maximum input power that can be applied to any port of the power meter without permanent change of its characteristics.

Attention: Applying more than the specified power might damage the power meter!

Minimum averaging time

The minimum selectable averaging time.

Noise pp (dark)

Specifies the peak-to-peak (pp) change of displayed power over time with zero input power (dark), excluding “Drift (dark)”. Powers expressed in Watts.

Conditions: All ports dark. Averaging time as specified. Other conditions as specified.

Measurement: As for “Drift (dark)”. From the measured P_i and the fitted curve F_i the noise curve $N_i = P_i - F_i$ is calculated. The noise N is

$$N = \max_i\{N_i\} - \min_i\{N_i\}$$

Note: The noise pp specification (rather than noise 2 sigma) is given for legacy reason.

Noise 2 sigma (dark)

Specifies twice the standard deviation of the measured dark power (with zero input power), excluding “Drift (dark)”. Power are expressed in Watts.

Conditions: All ports dark. Averaging time as specified. Other conditions as specified.

Measurement: As for “Drift (dark)”. From the measurement result P_i and the fitted curve F_i the noise N is calculated by

$$N = 2 * StDev_i\{P_i - F_i\}, \text{ where } StDev_i\{\} \text{ denotes the standard deviation over indices } i.$$

Operating humidity

Humidity range where the instrument is designed to be operated.

The instrument must not be operated outside this range. If previously stored beyond this range, wait for acclimation before turning on the instrument.

Operating temperature

Temperature range for which the specifications apply if not differently stated.

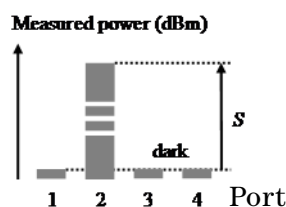
The instrument must not be operated outside this range. If previously stored beyond this range, wait for acclimation before turning on the instrument.

Port separation (static)

Specifies the difference between the power P applied to one port and the measured power D on any other port with no applied power (dark). Excluding “Noise pp (dark)” and “Drift (dark)”.

Powers expressed in dBm, port separation S expressed in dB,

$$S = P - D$$



Conditions: Applied power level as specified.

Port separation, dynamic

Specifies the difference between step power input P_{step} (with positive or negative slope) applied to one port and the maximum measured power change D_{chng} (positive or negative) on any other port without applied power (dark). Excluding “Noise pp (dark)” and “Drift (dark)”.

Powers expressed in dBm, dynamic port separation SD expressed in dB.

$$SD = P_{step} - D_{chng}$$

Conditions: Power step height as specified (1 mW).

Power range

Specifies the range from the smallest input power that causes a significant change of the measured (displayed) power to the highest power for which the specifications apply if not differently stated.

Measurement: The lower limit corresponds to half the “Noise pp (dark)”.

Polarization dependent responsivity (PDR)

Specifies the dependence of the measured power on the input state of polarization (SOP) as \pm half the difference between the highest and the lowest measured power over all SOPs, expressed in dB.

Powers expressed in dBm.

Conditions: As specified.

Range settling time (one range step)

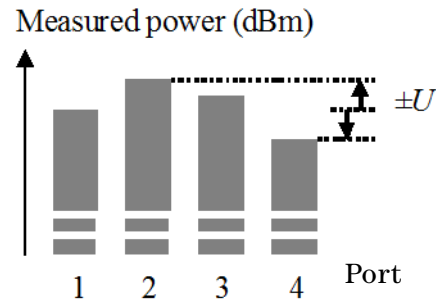
When changing from one power meter range to the next (one range higher or lower), the settling time specifies the time required for the power meter to settle into the new range. Measurements starting after that period are within specifications.

The time starts when the instrument receives the range change command (manual range) or when the instrument detects the requirement for power meter range change (autorange).

Conditions: As specified.

Relative port to port uncertainty

Specifies \pm half the maximum difference between the measured powers of different ports when applying the same stimulus. Measured powers expressed in dBm, the relative port to port uncertainty U expressed in \pm dB.



Conditions: As specified.

Return loss

The difference between the incident power and the power reflected back from the power meter into the input fiber, expressed in dB.

Powers expressed in dBm.

Conditions: As specified.

Specification wavelength range

The wavelength range for which all specifications and characteristics apply, if not differently stated.

Spectral ripple (due to interference)

A coherent input signal causes optical interference¹ between reflective interfaces within the power meter's optical assembly, including the end face of a connected fiber. Optical interference causes a wavelength-dependent periodic change of the power meter's responsivity. Spectral ripple is defined as \pm half the difference between the highest and the lowest power resulting from the periodic change.

Conditions: Constant input power, constant state of polarization (SOP). Connector as specified. Other conditions as specified.

Measurement: Using a laser source without spectral ripple or with known (monitored) spectral ripple and linewidth < 100 MHz and stepping the wavelength over the specified range. The periodic part in the measurement result is separated by subtracting the polynomial 2nd order fit (low frequency part).

Storage conditions

Allowed temperature and humidity range for the non-operating instrument. Wait for acclimation to within the “[Operating temperature](#)” before turning on the instrument.

Total uncertainty

The maximum relative difference U between measured (displayed) power M and actual (true) power P for a specified set of operating conditions, expressed in percent. Powers expressed in Watts. Excluding “[Noise pp \(dark\)](#)” and “[Drift \(dark\)](#)”.

$$U = 100\% * (M/P - 1)$$

Conditions: Operating conditions as specified. Other conditions as specified.

Uncertainty at reference conditions

The maximum relative difference U between measured (displayed) power M and actual (true) power P for the specified set of reference conditions, expressed in percent. Powers expressed in Watts.

$$U = 100\% * (M/P - 1)$$

Conditions: Reference conditions as specified.

Wavelength range

The range of wavelengths for which the power meter is calibrated.

Warm-up time

Time after power-up of the acclimated instrument after which the specifications and characteristics apply.

Literature

1 Fiber optic test and measurement, Hewlett Packard Professional Books, edited by Prentice Hall, ISBN 0-13-534330-5

Technical Specifications

All specifications apply for **autorange mode** and **continuous wave (CW)** signal if not differently stated. CW means constant signal within a time interval larger than the specified “settling time after changing power meter range”.

| Parameter | Specification |
|--|--|
| Sensor element | InGaAs |
| Wavelength range | 1250 nm to 1650 nm |
| Specification wavelength range | 1250 nm to 1625 nm (if not differently stated) |
| Power range | -80 dBm to +10 dBm |
| Maximum safe power | +16 dBm |
| Data logging capability | 1 Mio. measurement points per port |
| Averaging time | 1 μ s to 10 s |
| Applicable fiber type | Standard SM and MM $\leq 62.5 \mu\text{m}$ core size, NA ≤ 0.24 |
| Uncertainty at reference conditions ^{1 2} | $\pm 2.5\%$ |
| Total uncertainty ^{3 4 5} | $\pm 4.5\%$ |
| Relative port to port uncertainty ^{1 2 6 7} | ± 0.05 dB typ. |
| Linearity ^{4 5} at (23 \pm 5) $^{\circ}$ C over operating temperature | ± 0.02 dB ± 3 pW ± 0.04 dB ± 5 pW |
| Polarization dependent responsivity (PDR) ^{2 8} | < ± 0.015 dB (1520 nm to 1580 nm) < ± 0.01 dB typ. (1250 nm to 1580 nm) |
| Spectral ripple (due to interference) ⁹ | < ± 0.01 dB (1520 nm to 1625 nm) < ± 0.01 dB typ. (1250 nm to 1520 nm) |
| Drift (dark) ⁶ | ± 9 pW |
| Noise pp (dark) ² | <7 pW (1 s averaging time, 300 s observation time) |
| Noise 2σ (100,000 samples) ² | <i>Averaging time:</i> 1 μ s 25 μ s 1 ms |
| <i>PM range</i> -30 dBm | typ. < 0.1 nW < 0.025 nW < 0.005 nW |
| -20 dBm | typ. < 1.5 nW < 0.15 nW < 0.02 nW |
| - 10 dBm | typ. < 6 nW < 0.5 nW < 0.08 nW |
| 0 dBm | typ. < 60 nW < 4 nW < 0.8 nW |
| +10 dBm | typ. < 600 nW < 40 nW < 8 nW |

5 Specifications and Regulations Compliance

| Parameter | Specification |
|---|--|
| Dynamic range (logging mode) ^{2 6} | <i>Averaging time:</i> 1 μ s 25 μ s 1 ms |
| <i>PM range</i> -30 dBm | typ. > 43 dB > 49 dB > 57 dB |
| -20 dBm | typ. > 43 dB > 54 dB > 62 dB |
| -10 dBm | typ. > 46 dB > 57 dB > 64 dB |
| 0 dBm | typ. > 46 dB > 57 dB > 63 dB |
| +10 dBm | typ. > 43 dB > 54 dB > 60 dB |
| Port separation ⁴ | >85 dB (CW) (one neighbor port with 0 dBm) |
| Port separation, dynamic ⁴ | >70 dB typ. (one neighbor port with 0 dBm power in 0 dBm power meter range) |
| Frequency response | 3 dB cutoff frequency at 1 μ s averaging time, typical |
| <i>Range</i> -30 dBm | 10 kHz |
| -20 dBm | 130 kHz |
| -10 to +10 dBm | 250 kHz |
| Return loss ¹⁰ | > 50 dB (1520 nm to 1580 nm) > 57 dB typ. (1280 nm to 1580 nm) |
| Operating temperature | +5°C to +40°C |
| Operating humidity | 15% to 95%, non-condensing |
| Storage conditions | -40°C to +70°C |
| Warm-up time | 20 min. |
| Recommended recalibration period | 24 months |
| Dimensions | 1U half-rack (D x W x H:372 mm x 212 mm x 43 mm) (excluding front and back rubber cushions) |
| Weight | approx. 3 kg (6 lb) |

- 1 Reference conditions:
Single mode fiber SMF 9 μ m.
Power Level: -20 dBm to 0 dBm
On day of calibration (add $\pm 0.3\%$ for aging over one year; add $\pm 0.6\%$ for aging over two years)
Spectral width of source < 10 nm full-width half-maximum (FWHM)
Wavelength setting of power sensor corresponds to source wavelength ± 0.4 nm
- 2 Ambient temperature (23 \pm 5)°C
- 3 Operating conditions:
Single mode fiber SMF. For multimode fiber, typical.
Within one year of calibration; add $\pm 0.3\%$ for second year
Spectral width < 10 nm FWHM
Wavelength setting of power sensor corresponds to source wavelength ± 0.4 nm
- 4 Excluding noise and offset drift
- 5 Power range -60 dBm to +10 dBm
- 6 Temperature constant within ± 1 K after zeroing
- 7 Same 4-detector block, same wavelength
- 8 Straight connector, SMF

- 9 For constant state of polarization, source linewidth < 100 MHz, angled connector 8° , wavelength range 1520 nm to 1625 nm. Typical for 1250 nm to 1520 nm. Add ± 0.01 dB typ. within specification wavelength range for straight connector with ceramic ferrule.
- 10 Connector 8 deg. angled, ceramic ferrule, SMF

Declarations of Conformity

| | | |
|---|--|---|
|  Agilent Technologies | DECLARATION OF CONFORMITY According to ISO/IEC Guide 22 and CEN/CENELEC EN 45014 |  |
|---|--|---|

Manufacturer's Name: Agilent Technologies International sarl
Manufacturer's Address: Rue de la Gare 29
 CH-1110 Morges
 Switzerland

Declares under sole responsibility that the product as originally delivered

Product Name: **Optical Multiport Power Meter**
Product Number: **N7744A** 4 Channels
N7745A 8 Channels
Product Options: *This declaration covers all options of the above system.*

complies with the essential requirements of the following applicable European Directives, and carries the CE marking accordingly:

- The Low Voltage Directive 2006/95/EC
- The EMC Directive 2004/108/EC

and conforms with the following product standards:

| | Standard | Limit |
|---------------|--|--|
| EMC | IEC 61326-1:2005 / EN 61326-1:2006 CISPR 11:2003 / EN 55011:1998+A1:1999+A2 :2002 IEC 61000-4-2:1995+A1:1998+A2 :2000 / EN 61000-4-2:1995+A1:1998+A2:2001 IEC 61000-4-3:2002+A1:2002 / EN 61000-4-3:2002+A1:2002 IEC 61000-4-4:2004 / EN 61000-4-4:2004 IEC 61000-4-5:1995+A1:2000 / EN 61000-4-5:1995+A1:2001 IEC 61000-4-6:2003 / EN 61000-4-6:1996+A1:2001 IEC 61000-4-11:2004 / EN 61000-4-11:2004 Canada: ICES/NMB-001:2004 Australia/New Zealand: AS/NZS CISPR 11:2004 | Group 1 Class A 4 kV CD, 8 kV AD 3 V/m, 80-1000 MHz 0.5 kV signal lines, 1 kV power lines 0.5 kV line-line, 1 kV line-ground 3 V, 0.15-80 MHz 0% for 1/0.5 (0°, 180°) cycle 0% for 250/300 cycles 70% for 25/30 cycles |
| Safety | IEC 61010-1:2001 / EN 61010-1:2001 Canada: CAN/CSA-C22.2 No. 61010-1:2004 | |

Supplementary Information:

The products were tested in a typical configuration with Agilent Technologies test systems.

This DoC applies to above-listed products placed on the EU market after:

2008-April-01

 Date



 Name
 Product Quality & Compliance
 Agilent Technologies

 Title

For further information, please contact your local Agilent Technologies sales office, agent or distributor.

Regulations Information

EMC Canada

These ISM devices comply with Canadian ICES-001.
Ces appareils ISM sont conformes à la norme NMB-001 du Canada.

Acoustic Noise Information Germany

ISO 7779

$L_{pA} < 70$ dB(A), normal operation, operator position.

Remove all doubt

Our repair and calibration services will get your equipment back to you, performing like new, when promised. You will get full value out of your Agilent equipment throughout its lifetime. Your equipment will be serviced by Agilent-trained technicians using the latest factory calibration procedures, automated repair diagnostics and genuine parts. You will always have the utmost confidence in your measurements.

Agilent offers a wide range of additional expert test and measurement services for your equipment, including initial start-up assistance, onsite education and training, as well as design, system integration, and project management.

For more information on repair and calibration services, go to www.agilent.com/find/removealldoubt



Agilent E-mail Updates

Get the latest information on the products and applications you select.

www.agilent.com/find/emailupdates



Agilent Direct

Quickly choose and use your test equipment solutions with confidence.

www.agilent.com/find/agilentdirect



Agilent Open

Agilent Open simplifies the process of connecting and programming test systems to help engineers design, validate and manufacture electronic products. Agilent offers open connectivity for a broad range of systemready instruments, open industry software, PC-standard I/O and global support, which are combined to more easily integrate test system development.

www.agilent.com/find/open



LXI is the LAN-based successor to GPIB, providing faster, more efficient connectivity. Agilent is a founding member of the LXI consortium.

www.lxistandard.org

www.agilent.com

For more information on Agilent Technologies products, applications and services, please contact your local Agilent office. The complete list is available at:

www.agilent.com/find/contactus

Americas

| | |
|---------------|----------------|
| Canada | (877) 894-4414 |
| Latin America | 305 263 7500 |
| United States | (800) 829-4444 |

Asia Pacific

| | |
|-----------|----------------|
| Australia | 1 800 629 485 |
| China | 800 810 0189 |
| Hong Kong | 800 938 693 |
| India | 1 800 112 929 |
| Japan | 0120 (421) 645 |
| Korea | 080 769 0800 |
| Malaysia | 1 800 888 848 |
| Singapore | 1 800 375 8100 |
| Taiwan | 0800 047 866 |
| Thailand | 1 800 226 008 |

Europe and Middle East

| | |
|----------------|------------------------------|
| Austria | 0820 87 44 11 |
| Belgium | 32 (0) 2 404 93 40 |
| Denmark | 45 70 13 15 15 |
| Finland | 358 (0) 10 855 2100 |
| France | 0825 010 700 (€0.125/minute) |
| Germany | 01805 24 6333 (€0.14/minute) |
| Ireland | 1890 924 204 |
| Israel | 972-3-9288-504/544 |
| Italy | 39 02 92 60 8484 |
| Netherlands | 31 (0) 20 547 2111 |
| Spain | 34 (91) 631 3300 |
| Sweden | 0200-88 22 55 |
| Switzerland | 0800 80 53 53 |
| United Kingdom | 44 (0) 118 9276201 |

5 Specifications and Regulations Compliance



6 Cleaning Instructions

The following Cleaning Instructions contain some general safety precautions, which must be observed during all phases of cleaning. Consult your specific optical device manuals or guides for full information on safety matters.

Please try, whenever possible, to use physically contacting connectors, and dry connections. Clean the connectors, interfaces, and bushings carefully after use.

If you are unsure of the correct cleaning procedure for your optical device, we recommend that you first try cleaning a dummy or test device.

Agilent Technologies assume no liability for the customer's failure to comply with these requirements.

Cleaning Instructions for this Instrument

The Cleaning Instructions apply to a number of different types of Optical Equipment. Most relevant for this instrument is the section "How to clean connector adapters" on page 80 for cleaning the quad-adapters, and "How to clean optical glass plates" on page 82 for cleaning the front of the instrument.

Safety Precautions 68

Why is it important to clean optical devices? 69

What do I need for proper cleaning? 70

 Standard Cleaning Equipment 70

 Additional Cleaning Equipment 73

Preserving Connectors 75

Cleaning Instrument Housings 76

Which Cleaning Procedure should I use? 77

How to clean connectors 78

How to clean connector adapters 80

How to clean bare fiber adapters 81

How to clean optical glass plates 82

Additional Cleaning Information 83

 How to clean bare fiber ends 83

Other Cleaning Hints 84



Safety Precautions

Please follow the following safety rules:

- Do not remove instrument covers when operating.
- Ensure that the instrument is switched off throughout the cleaning procedures.
- Use of controls or adjustments or performance of procedures other than those specified may result in hazardous radiation exposure.
- Make sure that you disable all sources when you are cleaning any optical interfaces.
- Under no circumstances look into the end of an optical device attached to optical outputs when the device is operational. The laser radiation is not visible to the human eye, but it can seriously damage your eyesight.
- To prevent electrical shock, disconnect the instrument from the mains before cleaning. Use a dry cloth, or one slightly dampened with water, to clean the external case parts. Do not attempt to clean internally.
- Do not install parts or perform any unauthorized modification to optical devices.
- Refer servicing only to qualified and authorized personnel.

Why is it important to clean optical devices ?

In transmission links optical fiber cores are about 9 μm (0.00035") in diameter. Dust and other particles, however, can range from tenths to hundredths of microns in diameter. Their comparative size means that they can cover a part of the end of a fiber core, and as a result will reduce the performance of your system.

Furthermore, the power density may burn dust into the fiber and cause additional damage (for example, 0 dBm optical power in a single mode fiber causes a power density of approximately 16 million W/m^2). If this happens, measurements become inaccurate and non-repeatable.

Cleaning is, therefore, an essential yet difficult task. Unfortunately, when comparing most published cleaning recommendations, you will discover that they contain several inconsistencies. In this section, we want to suggest ways to help you clean your various optical devices, and thus significantly improve the accuracy and repeatability of your lightwave measurements.

What do I need for proper cleaning?

Some Standard Cleaning Equipment is necessary for cleaning your instrument. For certain cleaning procedures, you may also require certain Additional Cleaning Equipment.

Standard Cleaning Equipment

Before you can start your cleaning procedure you need the following standard equipment:

- Dust and shutter caps
- Isopropyl alcohol
- Cotton swabs
- Soft tissues
- Pipe cleaner
- Compressed air

Dust and shutter caps

All of Agilent Technologies' lightwave instruments are delivered with either laser shutter caps or dust caps on the lightwave adapter. Any cables come with covers to protect the cable ends from damage or contamination.

We suggest these protected coverings should be kept on the equipment at all times, except when your optical device is in use. Be careful when replacing dust caps after use. Do not press the bottom of the cap onto the fiber too hard, as any dust in the cap can scratch or pollute your fiber surface.

If you need further dust caps, please contact your nearest Agilent Technologies sales office.

Isopropyl alcohol

This solvent is usually available from any local pharmaceutical supplier or chemist's shop.

If you use isopropyl alcohol to clean your optical device, do not immediately dry the surface with compressed air (except when you are cleaning very sensitive optical devices). This is because the dust and the dirt is solved and will leave behind filmy deposits after the alcohol is evaporated. You should therefore first remove the alcohol and the dust with a soft tissue, and then use compressed air to blow away any remaining filaments.

If possible avoid using denatured alcohol containing additives. Instead, apply alcohol used for medical purposes.

Never try to drink this alcohol, as it may seriously damage to your health.

Do not use any other solvents, as some may damage plastic materials and claddings. Acetone, for example, will dissolve the epoxy used with fiber optic connectors. To avoid damage, only use isopropyl alcohol.

Cotton swabs

We recommend that you use swabs such as Q-tips or other cotton swabs normally available from local distributors of medical and hygiene products (for example, a supermarket or a chemist's shop). You may be able to obtain various sizes of swab. If this is the case, select the smallest size for your smallest devices.

Ensure that you use natural cotton swabs. Foam swabs will often leave behind filmy deposits after cleaning.

Use care when cleaning, and avoid pressing too hard onto your optical device with the swab. Too much pressure may scratch the surface, and could cause your device to become misaligned. It is advisable to rub gently over the surface using only a small circular movement.

Swabs should be used straight out of the packet, and never used twice. This is because dust and dirt in the atmosphere, or from a first cleaning, may collect on your swab and scratch the surface of your optical device.

Soft tissues

These are available from most stores and distributors of medical and hygiene products such as supermarkets or chemists' shops.

We recommend that you do not use normal cotton tissues, but multi-layered soft tissues made from non-recycled cellulose. Cellulose tissues are very absorbent and softer. Consequently, they will not scratch the surface of your device over time.

Use care when cleaning, and avoid pressing on your optical device with the tissue. Pressing too hard may lead to scratches on the surface or misalignment of your device. Just rub gently over the surface using a small circular movement.

Use only clean, fresh soft tissues and never apply them twice. Any dust and dirt from the air which collects on your tissue, or which has gathered after initial cleaning, may scratch and pollute your optical device.

Pipe cleaner

Pipe cleaners can be purchased from tobacconists, and come in various shapes and sizes. The most suitable one to select for cleaning purposes has soft bristles, which will not produce scratches.

There are many different kinds of pipe cleaner available from tobacco shops.

The best way to use a pipe cleaner is to push it in and out of the device opening (for example, when cleaning an interface). While you are cleaning, you should slowly rotate the pipe cleaner.

Only use pipe cleaners on connector interfaces or on feed through adapters. Do not use them on optical head adapters, as the center of a pipe cleaner is hard metal and can damage the bottom of the adapter.

Your pipe cleaner should be new when you use it. If it has collected any dust or dirt, this can scratch or contaminate your device.

The tip and center of the pipe cleaner are made of metal. Avoid accidentally pressing these metal parts against the inside of the device, as this can cause scratches.

Compressed air

Compressed air can be purchased from any laboratory supplier.

It is essential that your compressed air is free of dust, water and oil. Only use clean, dry air. If not, this can lead to filmy deposits or scratches on the surface of your connector. This will reduce the performance of your transmission system.

When spraying compressed air, hold the can upright. If the can is held at a slant, propellant could escape and dirty your optical device. First spray into the air, as the initial stream of compressed air could contain some condensation or propellant. Such condensation leaves behind a filmy deposit.

Please be friendly to your environment and use a CFC-free aerosol.

Additional Cleaning Equipment

Some Cleaning Procedures need the following equipment, which is not required to clean each instrument:

- Microscope with a magnification range about 50X up to 300X
- Ultrasonic bath
- Warm water and liquid soap
- Premoistened cleaning wipes
- Polymer film
- Infrared Sensor Card

Microscope with a magnification range about 50X up to 300X

A microscope can be found in most photography stores, or can be obtained through or specialist mail order companies. Special fiber-scopes are available from suppliers of splicing equipment.

Ideally, the light source on your microscope should be very flexible. This will allow you to examine your device closely and from different angles.

A microscope helps you to estimate the type and degree of dirt on your device. You can use a microscope to choose an appropriate cleaning method, and then to examine the results. You can also use your microscope to judge whether your optical device (such as a connector) is severely scratched and is, therefore, causing inaccurate measurements.

Ultrasonic bath

Ultrasonic baths are also available from photography or laboratory suppliers or specialist mail order companies.

An ultrasonic bath will gently remove fat and other stubborn dirt from your optical devices. This helps increase the life span of the optical devices.

Only use isopropyl alcohol in your ultrasonic bath, as other solvents may damage.

Warm water and liquid soap

Only use water if you are sure that there is no other way of cleaning your optical device without corrosion or damage. Do not use hot water, as this may cause mechanical stress, which can damage your optical device.

Ensure that your liquid soap has no abrasive properties or perfume in it. You should also avoid normal washing-up liquid, as it can cover your device in an iridescent film after it has been air-dried.

Some lenses and mirrors also have a special coating, which may be sensitive to mechanical stress, or to fat and liquids. For this reason we recommend you do not touch them.

If you are not sure how sensitive your device is to cleaning, please contact the manufacturer or your sales distributor.

Premoistened cleaning wipes

Use pre-moistened cleaning wipes as described in each individual cleaning procedure. Cleaning wipes may be used in every instance where a moistened soft tissue or cotton swab is applied.

Polymer film

Polymer film is available from laboratory suppliers or specialist mail order companies.

Using polymer film is a gentle method of cleaning extremely sensitive devices, such as reference reflectors and mirrors.

Infrared Sensor Card

Infrared sensor cards are available from laboratory suppliers or specialist mail order companies.

With this card you are able to control the shape of laser light emitted. The invisible laser beam is projected onto the sensor card, then becomes visible to the normal eye as a round spot.

Take care never to look into the end of a fiber or any other optical component, when they are in use. This is because the laser can seriously damage your eyes.

Preserving Connectors

Listed below are some hints on how best to keep your connectors in the best possible condition.

Making Connections

Before you make any connection you must ensure that all cables and connectors are clean. If they are dirty, use the appropriate cleaning procedure.

When inserting the ferrule of a patchcord into a connector or an adapter, make sure that the fiber end does not touch the outside of the mating connector or adapter. Otherwise you will rub the fiber end against an unsuitable surface, producing scratches and dirt deposits on the surface of your fiber.

Dust Caps and Shutter Caps

Be careful when replacing dust caps after use. Do not press the bottom of the cap onto the fiber as any dust in the cap can scratch or dirty your fiber surface.

When you have finished cleaning, put the dust cap back on, or close the shutter cap if the equipment is not going to be used immediately.

Keep the caps on the equipment always when it is not in use.

All of Agilent Technologies' lightwave instruments and accessories are shipped with either laser shutter caps or dust caps. If you need additional or replacement dust caps, contact your nearest Agilent Technologies Sales/Service Office.

Immersion Oil and Other Index Matching Compounds

Where it is possible, do not use immersion oil or other index matching compounds with your device. They are liable to impair and dirty the surface of the device. In addition, the characteristics of your device can be changed and your measurement results affected.

Cleaning Instrument Housings

Use a dry and very soft cotton tissue to clean the instrument housing and the keypad. Do not open the instruments as there is a danger of electric shock, or electrostatic discharge. Opening the instrument can cause damage to sensitive components, and in addition your warranty will be voided.

Never open the instruments as they can be damaged. Opening the instruments puts you in danger of receiving an electrical shock from your device, and renders your warranty void.

Which Cleaning Procedure should I use?

Light dirt

If you just want to clean away light dirt, observe the following procedure for all devices:

- Use compressed air to blow away large particles.
- Clean the device with a dry cotton swab.
- Use compressed air to blow away any remaining filament left by the swab.

Heavy dirt

If the above procedure is not enough to clean your instrument, follow one of the procedures below. Please consult “Cleaning Instructions for this Instrument” on page 67 for the procedure relevant for this instrument.

If you are unsure of how sensitive your device is to cleaning, please contact the manufacturer or your sales distributor

How to clean connectors

Cleaning connectors is difficult as the core diameter of a single-mode fiber is only about 9 μm . This generally means you cannot see streaks or scratches on the surface. To be certain of the condition of the surface of your connector and to check it after cleaning, you need a microscope.

In the case of scratches, or of dust that has been burnt onto the surface of the connector, you may have no option but to polish the connector. This depends on the degree of dirtiness, or the depth of the scratches. This is a difficult procedure and should only be performed by skilled personal, and as a last resort as it wears out your connector.

WARNING

Never look into the end of an optical cable that is connected to an active source.

To assess the projection of the emitted light beam you can use an infrared sensor card. Hold the card approximately 5 cm from the output of the connector. The invisible emitted light is project onto the card and becomes visible as a small circular spot.

Preferred Procedure

Use the following procedure on most occasions.

- 1 Clean the connector by rubbing a new, dry cotton-swab over the surface using a small circular movement.
- 2 Blow away any remaining lint with compressed air.

Procedure for Stubborn Dirt

Use this procedure particularly when there is greasy dirt on the connector:

- 1 Moisten a new cotton-swab with isopropyl alcohol.
- 2 Clean the connector by rubbing the cotton-swab over the surface using a small circular movement.
- 3 Take a new, dry soft-tissue and remove the alcohol, dissolved sediment and dust, by rubbing gently over the surface using a small circular movement.
- 4 Blow away any remaining lint with compressed air.

An Alternative Procedure

A better, more gentle, but more expensive cleaning procedure is to use an ultrasonic bath with isopropyl alcohol.

- 1** Hold the tip of the connector in the bath for at least three minutes.
- 2** Take a new, dry soft-tissue and remove the alcohol, dissolved sediment and dust, by rubbing gently over the surface using a small circular movement.
- 3** Blow away any remaining lint with compressed air.

How to clean connector adapters

Preferred Procedure

Use the following procedure on most occasions.

- 1 Clean the adapter by rubbing a new, dry cotton-swab over the surface using a small circular movement.
- 2 Blow away any remaining lint with compressed air.

Procedure for Stubborn Dirt

Use this procedure particularly when there is greasy dirt on the adapter:

- 1 Moisten a new cotton-swab with isopropyl alcohol.
- 2 Clean the adapter by rubbing the cotton-swab over the surface using a small circular movement.
- 3 Take a new, dry soft-tissue and remove the alcohol, dissolved sediment and dust, by rubbing gently over the surface using a small circular movement.
- 4 Blow away any remaining lint with compressed air.

How to clean bare fiber adapters

Bare fiber adapters are difficult to clean. Protect from dust unless they are in use.

CAUTION

Never use any kind of solvent when cleaning a bare fiber adapter as solvents can damage the foam inside some adapters.

They can deposit dissolved dirt in the groove, which can then dirty the surface of an inserted fiber.

Preferred Procedure

Use the following procedure on most occasions.

- 1 Blow away any dust or dirt with compressed air.

How to clean optical glass plates

The multiport power meter has an optical glass plate to protect the sensor. This has a special coating that is sensitive to solvents, grease, liquid and mechanical abrasion. Take extra care when cleaning this plate.

Preferred Procedure

Use the following procedure on most occasions.

- 1 Clean the plate by rubbing a new, dry cotton-swab over the surface using a small circular movement.
- 2 Blow away any remaining lint with compressed air.

Procedure for Stubborn Dirt

Use this procedure particularly when there is greasy dirt on the plate:

- 1 Moisten a new cotton-swab with isopropyl alcohol.
- 2 Clean the plate by rubbing the cotton-swab over the surface using a small circular movement.
- 3 Using a new, dry cotton-swab remove the alcohol, any dissolved sediment and dust.
- 4 Blow away any remaining lint with compressed air.

Additional Cleaning Information

The following cleaning procedures may be used with other optical equipment:

- How to clean bare fiber ends

How to clean bare fiber ends

Bare fiber ends are often used for splices or, together with other optical components, to create a parallel beam. The end of a fiber can often be scratched. You make a new cleave. To do this:

- 1 Strip off the cladding.
- 2 Take a new soft-tissue and moisten it with isopropyl alcohol.
- 3 Carefully clean the bare fiber with this tissue.
- 4 Make your cleave and immediately insert the fiber into your bare fiber adapter in order to protect the surface from dirt.

Other Cleaning Hints

Selecting the correct cleaning method is an important element in maintaining your equipment and saving you time and money. This Appendix highlights the main cleaning methods, but cannot address every individual circumstance.

This section contain some additional hints which we hope will help you further. For further information, please contact your local Agilent Technologies representative.

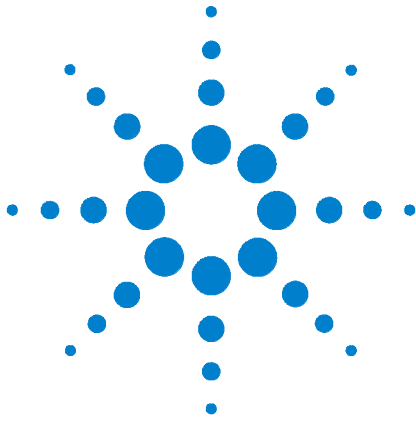
Making the connection

Before you make any connection you must ensure that all lightwave cables and connectors are clean. If not, then use appropriate the cleaning methods.

When you insert the ferrule of a patchcord into a connector or an adapter, ensure that the fiber end does not touch the outside of the mating connector or adapter. Otherwise, the fiber end will rub up against something which could scratch it and leave deposits.

Lens cleaning papers

Note that some special lens cleaning papers are not suitable for cleaning optical devices like connectors, interfaces, lenses, mirrors and so on. To be absolutely certain that a cleaning paper is applicable, please ask the salesperson or the manufacturer.

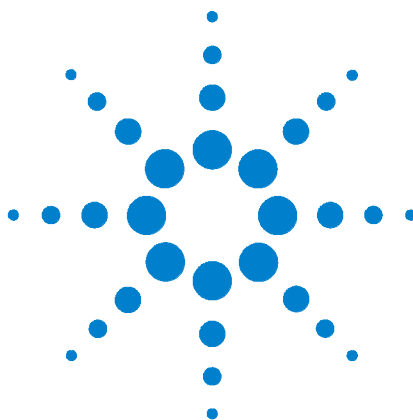


7 Firmware Upgrades

Updated versions of the firmware for the N7744A and N7745A may be released from time to time. These will then be available from the Agilent web page (www.agilent.com/find/octfirmware) and will include the update application and instructions.



7 Firmware Upgrades



8 Error Messages

SYST:ERR? 88

SYST:ERR?

The **synt:err?** command returns the next error from the error queue (refer to the *Programming Guide* for details).

Each error has an error code and a short description of the error, separated by comma. Please note that the error codes are returned as signed integer numbers in a range from -32768 to +32767 (INT16). Negative error numbers are defined by the SCPI standard, positive error numbers are device dependent.

Please find below a complete list of all implemented error codes:

- 100, "Command error"
- 101, "Invalid character"
- 102, "Syntax error"
- 103, "Invalid separator"
- 104, "Data type error"
- 105, "GET not allowed"
- 108, "Parameter not allowed"
- 109, "Missing parameter"
- 110, "Command header error"
- 111, "Header separator error"
- 112, "Program mnemonic too long"
- 113, "Undefined header"
- 114, "Header suffix out of range"
- 120, "Numeric data error"
- 121, "Invalid character in number"
- 123, "Exponent too large"
- 124, "Too many digits"
- 128, "Numeric data not allowed"
- 130, "Suffix error"
- 131, "Invalid suffix"
- 134, "Suffix too long"
- 138, "Suffix not allowed"
- 140, "Character data error"
- 141, "Invalid character data"
- 144, "Character data too long"
- 148, "Character data not allowed"
- 150, "String data error"

- 151, "Invalid string data"
- 158, "String data not allowed"
- 168, "Block data not allowed"
- 178, "Expression data not allowed"

- 200, "Execution error"
- 220, "Parameter error"
- 220, "Parameter for reference channel not allowed(stdparmError)"
- 220, "Parameter error (StatParmOutOfRange)"
- 222, "Data out of range"
- 222, "Data out of range (ParmTooSmall)"
- 222, "Data out of range (ParmTooLarge)"
- 223, "Too much data"
- 224, "Illegal parameter value"

- 300, "Internal error"
- 310, "System error (CaldataAccessError)"
- 310, "System error (SettingAccessError)"
- 310, "System error (EepromAccessError)"
- 310, "System error (RtcAccessError)"

- 601, "Not allowed while (re)starting network"
- 602, "Network startup failed"
- 610, "Not allowed before bootup finished"
- 611, "Not allowed because of a bootup error"
- 613, "Not allowed during firmware download"
- 616, "Not allowed while ongoing zeroing"

8 Error Messages

Index

A

AC Power, 14
Accessories, 49
Agilent 8163A/B, 12
Application, 45
 Logging, 46
 Stability, 47

C

Calibration Offset, 38
caution, definition of, 3
CE mark, 5
CSA mark, 5

D

dBm, 37
disposal, 5

E

Environment
 altitude, 16
 humidity, 16
 operating, 16
 pollution, 16
 Storage, 16
 temperature, 16

G

GPIB
 Cables and Adapters, 50

I

Initial inspection, 13
Inspection, 13

L

Line power cable, 14
Logging, 46

M

MinMax Mode, 42

O

Optional features
 Agilent 8163A/B, 50

P

Power
 power meters, 37
Power Measurement
 averaging time, 42
 calibration offset, 38
 number of digits, 37
 power units, 37
 power value, 37
 reference, 38
 reference another port, 39
 setting wavelength, 40
Power supply requirements
 AC, 14
Power Units, 37

R

Range
 auto, 41
 range mode, 41
 setting, 41
recycling, 5
 symbol, 5
Reference, 38

S

safety symbols, 3
Specifications
 Agilent 8163A, 59
Stability, 47
symbols, safety, 3

T

Temperature for operation and storage, 16
Triggers
 Power Meters, 43

W

warning, definition of, 3
Watts, 37
Wavelength

power meters, 40

Z

Zeroing Electrical Offsets, 40

© Agilent Technologies Deutschland
GmbH 2008

Printed in Germany
First edition, August 2008

N7744-90B01



Agilent Technologies